

To ~~So~~ faithfully ~~and~~

Northwest Weavers

Volume II

Number 2



Price 25 Cents

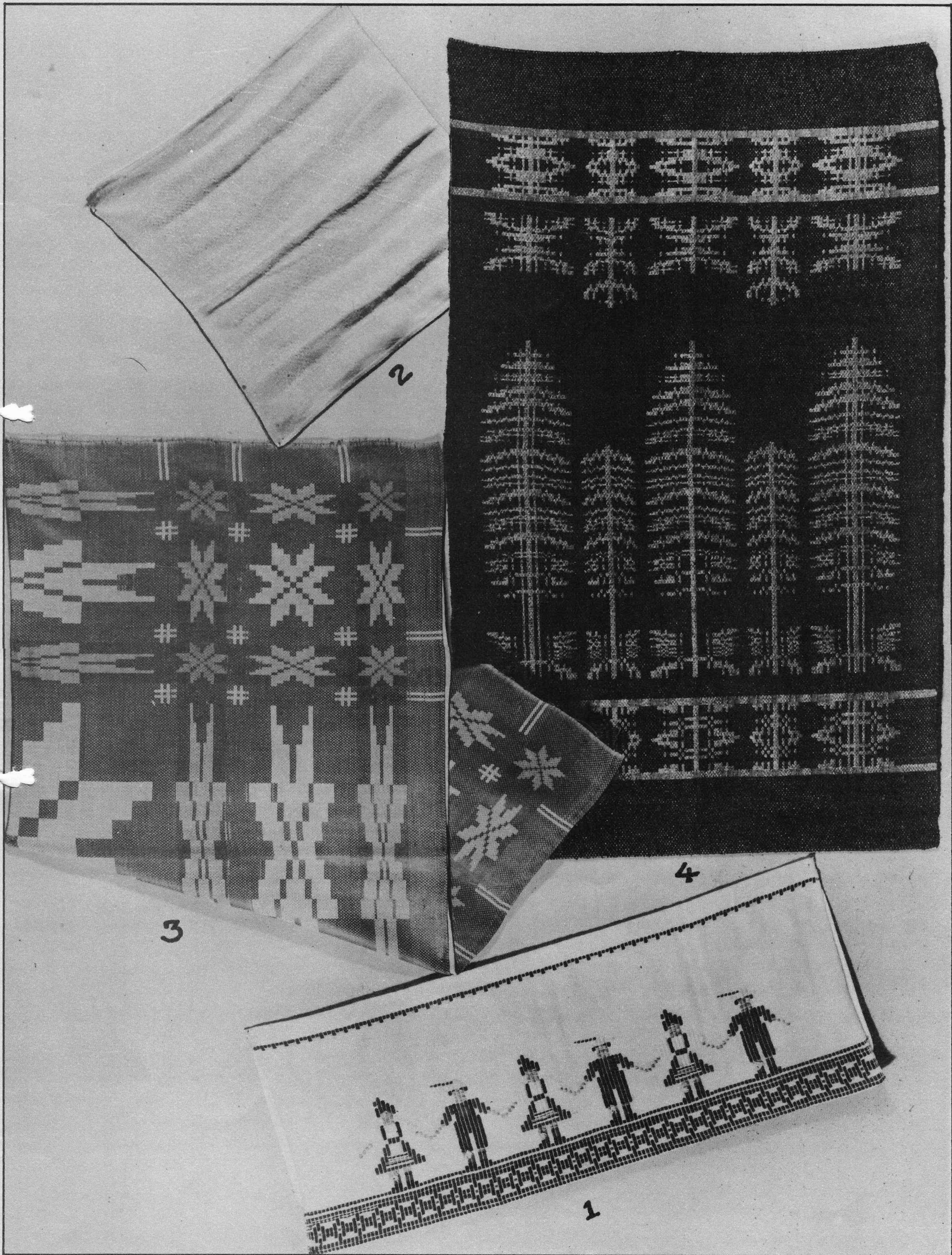
Northwest Weavers published four times a year
at 25 cents a copy. For subscriptions send
one dollar.

NORTHWEST WEAVERS

Care of Ruth Busfield, Secretary

MONROE, WASHINGTON

(Include Sales Tax in State of Washington)



VALANCE done in Dukagang
By Ruth Raven Busfield, Monroe, Washington

1.

Materials:

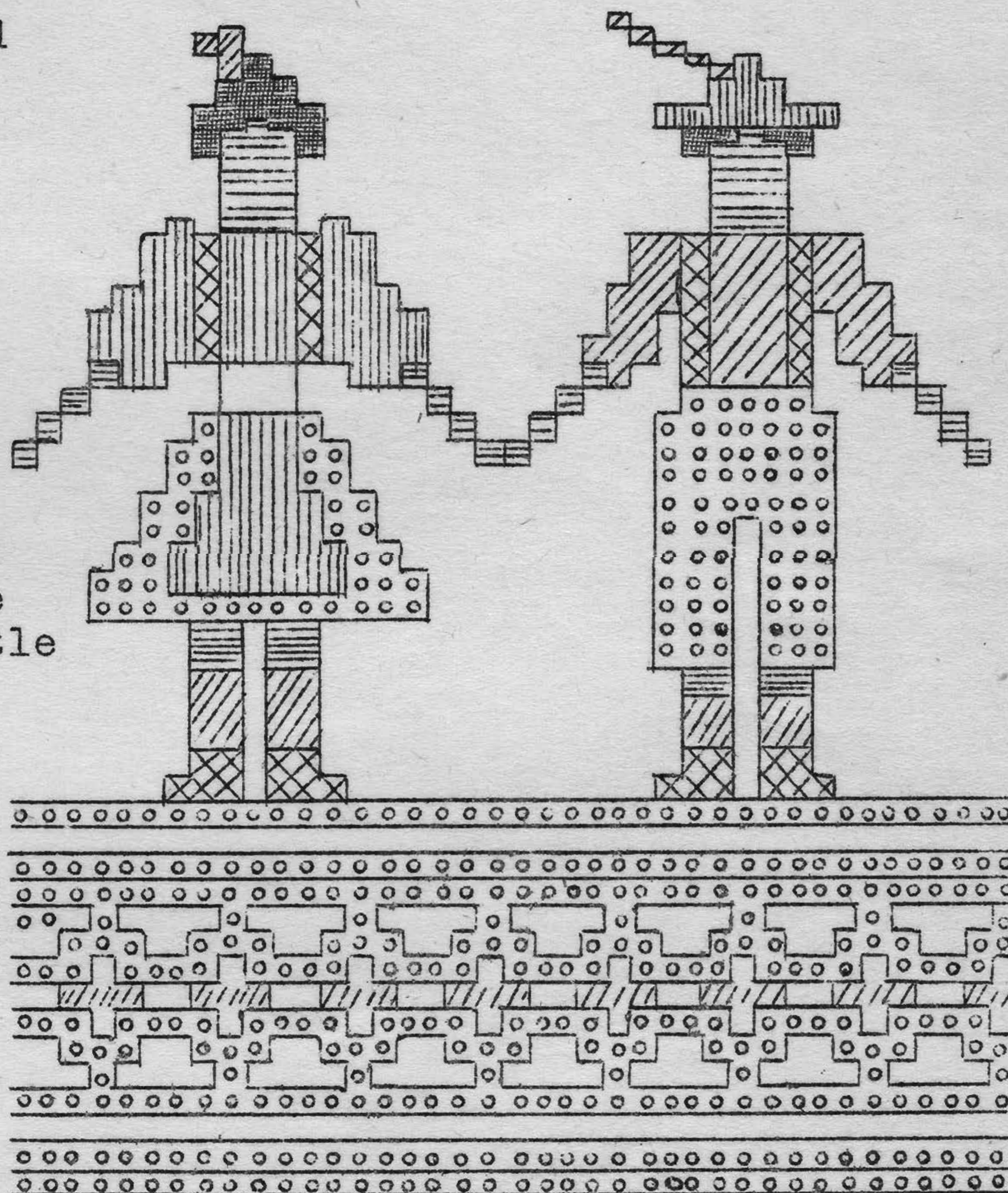
Warp...16/2 Swedish weaving cotton
Weft...16/2 " " "
Tabby...16/2 " " "
Reed...#20 set one thread to a dent

Draft:

Rosepath.

My kitchen needed a touch of color at the windows. Regular curtains would interfere with activity in the sink, so I decided colorful valances would fill the need. I worked out a design in Dukagang, using as my inspiration a pair of salt and pepper shakers, made in the form of peasant figures. For the center curtain I used three boy and girl pairs walking hand and hand. For the two side valances I made smaller, simpler figures, pretending they were the children of the three couples in the center valance.

I have shown in the color draft that the girl's skirt and the boy's overalls are of blue, however the skirt is a much lighter blue. The same is true of the girl's blouse and apron. It is again lighter than the boy's hat. I added yellow tassels to boot tops and some colored stripes in the girl's apron. The figures are approximately 4 inches high. The finished valance is 10 by 26 inches. The effect produced is well worth the time and effort and the cost is little as short ends of yarn may be used for the colored figures.



Red
Yellow
Blue
Navy
Flesh
Brown

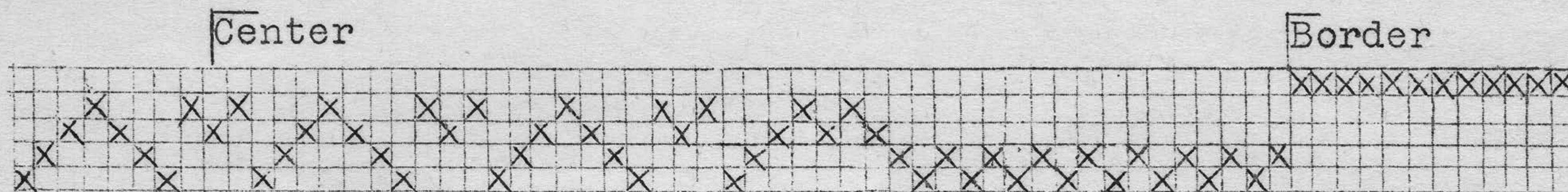
BRONSON WEAVE NAPKINS ON SIX HARNESSES
 Arranged by Ruth Raven Busfield, Monroe, Washington

2.

Materials:

Warp...40/2 linen
 Weft...40/2 linen
 Reed...#20, set one thread to a dent
 Ends...452, for 14" napkins, finished.

Short Draft:



Tie Up:

	1	2	3	4	5	A	B
6	•	•	•	•	•	•	X
5	•	•	•	X	•	•	X
4	•	•	X	•	•	•	X
3	•	X	•	•	•	•	X
2	X	•	•	•	•	•	X
1	X	X	X	X	X	•	•

Long Draft: In threading Bronson weave, each X on the short draft is expanded into a unit of 4 threads, thus, the first X would be threaded 1,6,2,6, and so on thru out the entire pattern.

Treadling: Each unit of Bronson weave is treadled in 4 steps.

Tabby B
 Pattern treadle
 Tabby B
 Pattern treadle

one unit.
 B is always the tabby when weaving the pattern.

Treadling Draft:

Tabbies A & B for 2 inches.

Pattern treadle	2	-	1	unit	8x
	1	-	1	"	
	2	-	1	"	
	3	-	1		
	4	-	1		
	3	-	1		
	4	-	1		
	3	-	1		
	2	-	1		
	1	-	1		
	4	-	1		
	3	-	1		
	4	-	1		
	1	-	1		
	2	-	1		
	3	-	1		
	4	-	1		
	3	-	1		

2-1	unit
1-1	"
4-1	
3-1	
4-1	
1-1	
2-1	
3-1	
4-1	
3-1	
2-1	
1-1	
2-1	

A & B tabbies for 2 inches

The pattern for these napkins is arranged from the ancient table cloth given in Northwest Weaver Vol. 1 #3.

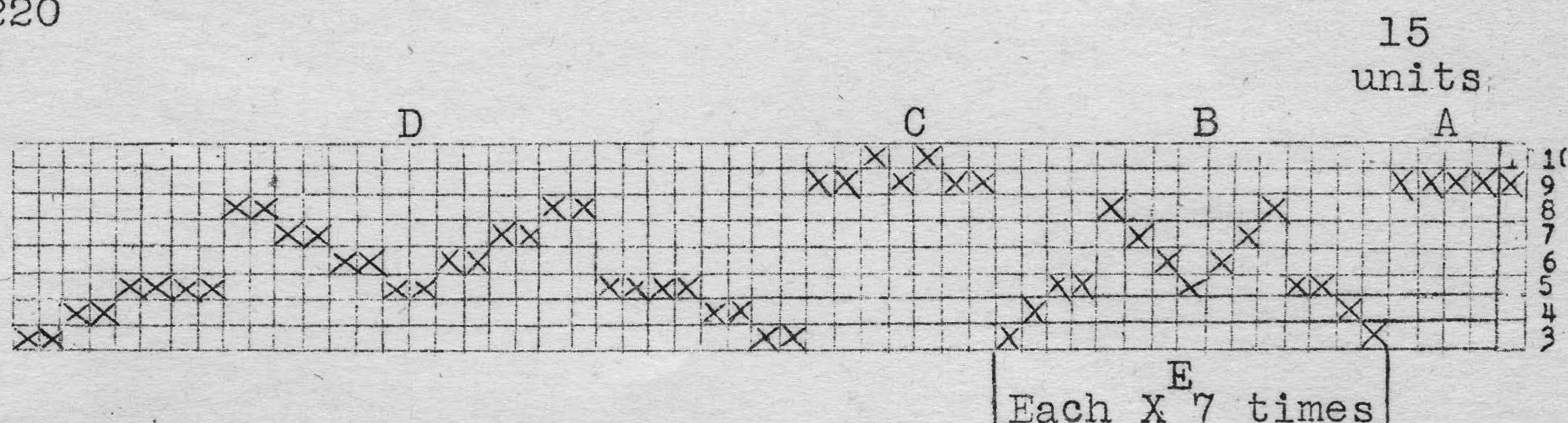
CONSTELLATIONS...A Summer and Winter weave on ten harnesses By Margaret Bergman, Poulsbo, Washington

3.

Materials:

Warp...20/2 cotton
Weft...Perle cotton #10
Tabby..Basting thread
Reed...#12, set 2 threads to a dent
Ends...1220

Short Draft:



Tie up

	1	2	3	4	5	6	7	8	4	3	2	1
10	o	o	o	o	o	o	X	o	o	o	o	X
9	o	o	o	o	o	o	X	X	o	o	o	X
8	X	X	o	X	X	X	o	o	o	o	o	X
7	X	o	X	X	X	o	o	o	o	o	o	X
6	o	X	X	X	o	o	o	o	o	o	o	X
5	X	X	X	o	o	o	o	o	o	o	o	X
4	o	X	X	o	o	o	o	o	o	o	o	X
3	o	o	X	o	o	o	o	o	o	o	o	X
2									o	X	X	o
1									X	X	o	o

Pattern

Tabby

X is tied to Lower Lamms

Long Draft: In threading, each X of the short draft is expanded into a unit of 4 threads. The first unit #9 is threaded 1,9, 2,9, and this is done for the 15 units. The entire pattern is expanded in this way. B,D,E of the draft are stars and C we call a comet. A is the border. The entire piece is threaded in the following order: A,B,C,D,C,B,C,E,C,B, C,D,C,B,A, making a series of small stars and comets with the large star in the center.

Treadling: Each unit of Summer and Winter is treadled in eight steps;

1st step..	Tabby	1	alone
2nd	"	2	and pattern treadle
3rd	"	3	alone
4th	"	4	and pattern treadle
5th	"	1	alone
6th	"	4	and pattern treadle
7th	"	3	alone
8th	"	2	and pattern treadle

One unit.

The same pattern treadle is used thru the entire unit. The treadling below gives the pattern treadle to be used, then the number of units.

The tabbies 1 and 3 are regular tabbies, while tabbies 2 and 4, with the pattern treadle, carries the colored weft thread.

Treadling of piece:

Treadle #8-12 units, Border A

Treadle #6-1 units

5-1

4-2

3-1

2-1

1-1

4-1

1-1

2-1

3-1

4-2

5-1

6-1

Treadle thru once for Star B

Double for Star D as 6-2 units

5-2 "

4-4 "

Multiply 7 times for Star E

as 6-7 units

5-7 "

4-14 -

Treadle #8-2 units

7-1

8-1

7-1

8-2

Comet C

Treadling the entire piece in the same order as it is threaded.

THE HEMLOCKS WALL HANGING, a summer and winter weave on eight harnesses
By Margaret Bergman, Poulsbo, Washington

4.

Materials:

Warp...20/2 cotton

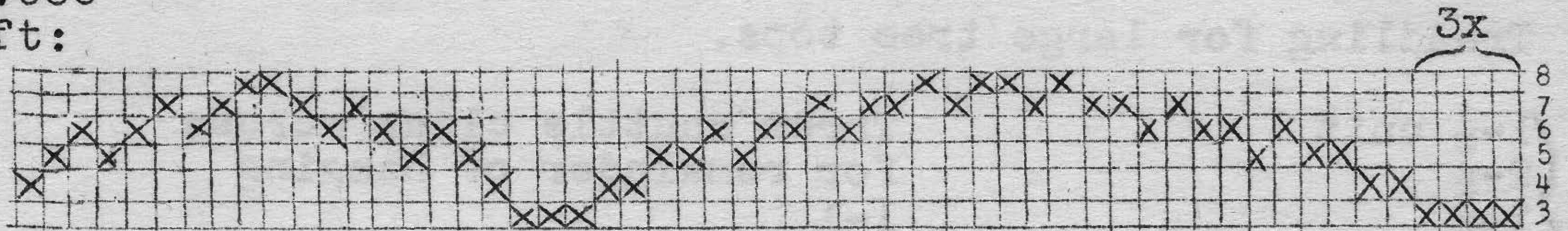
Weft...Wool yarn, medium fine

Tabby...Gold metallic thread

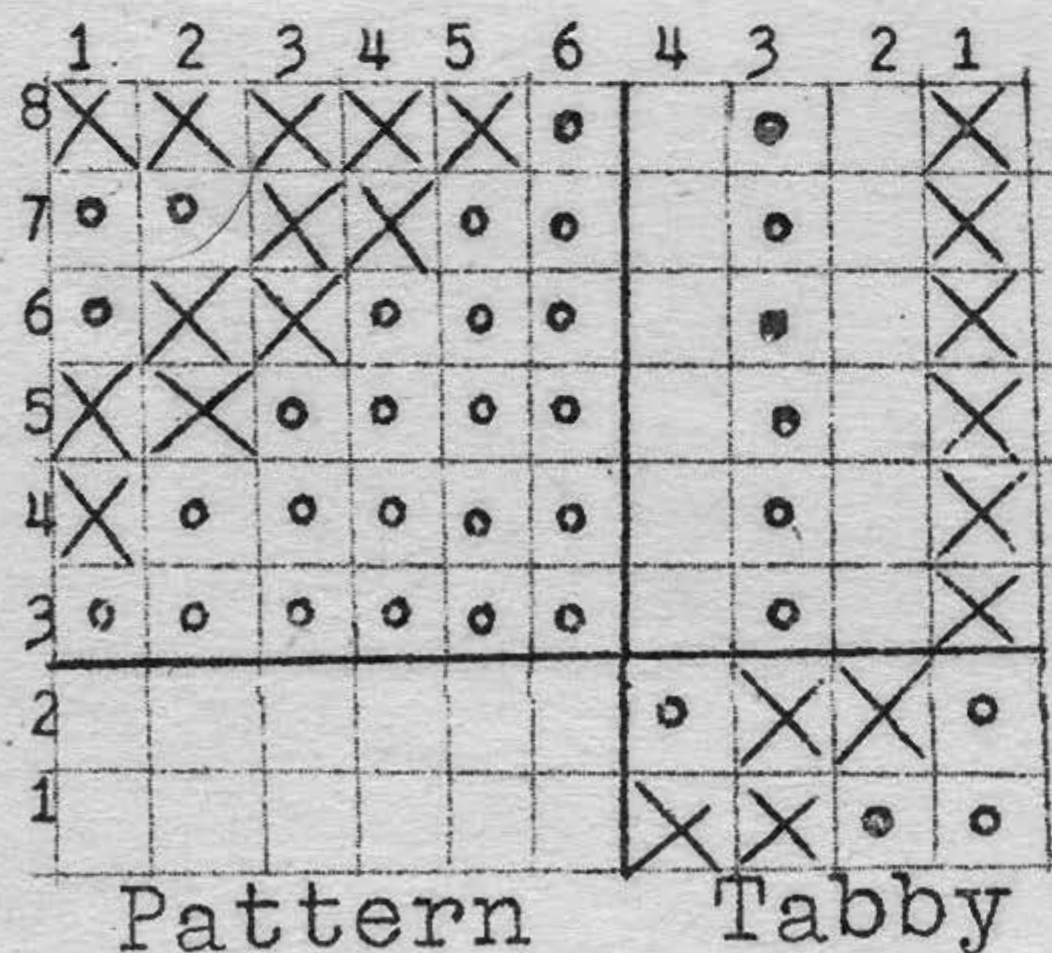
Reed...#15, set 2 threads to a dent.

Ends...656

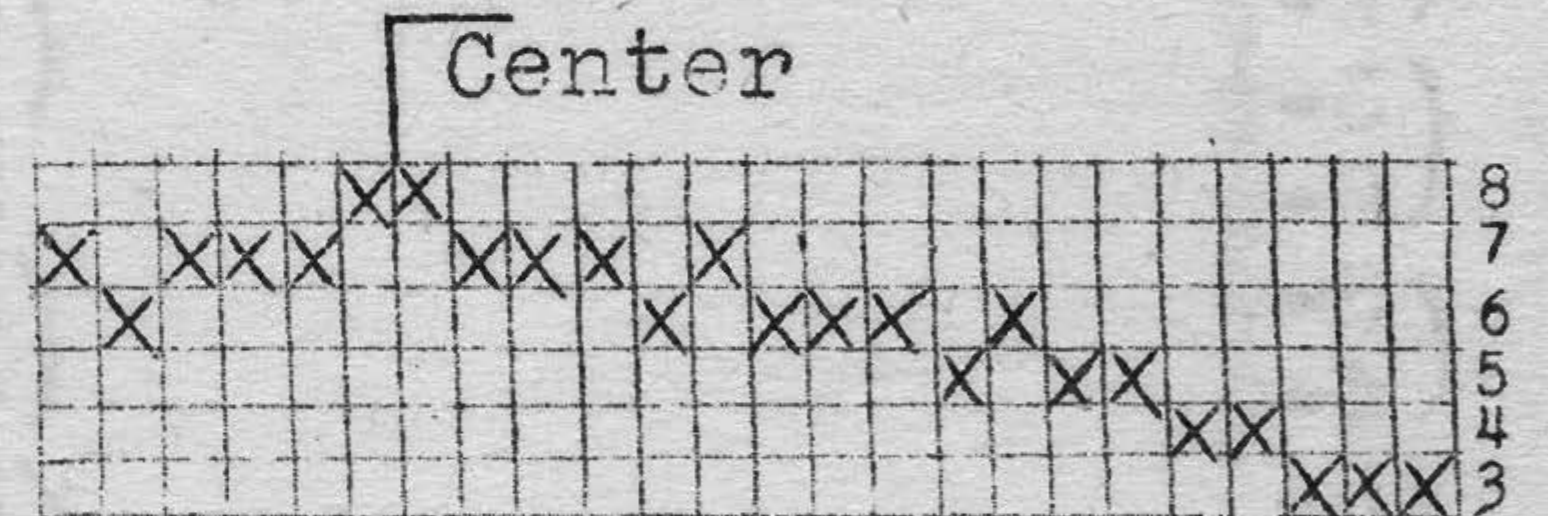
Short Draft:



Tie up:

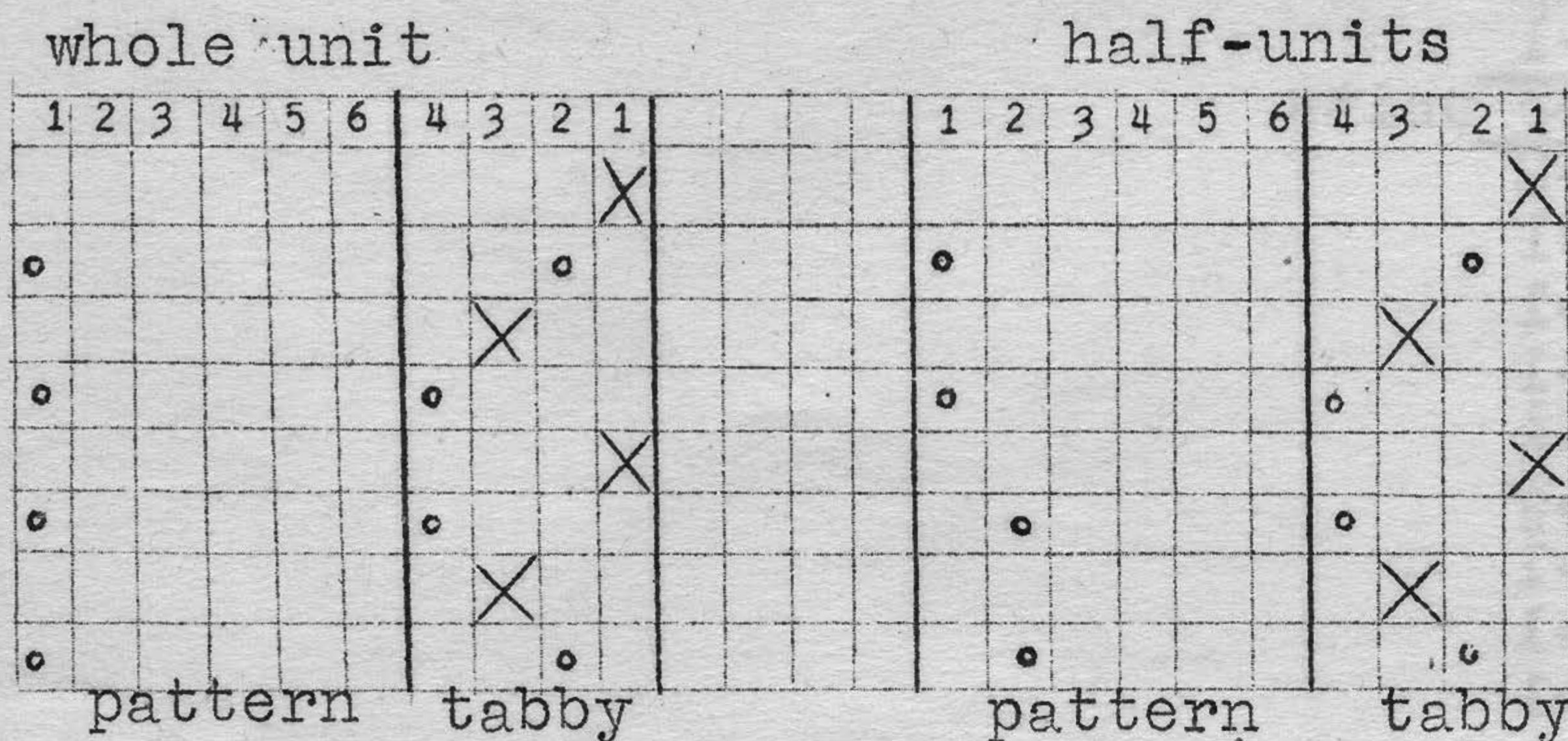


X on Lower Lamms
O on Upper Lamms



Long Draft: In threading, each X on the short draft is expanded into a unit of 4 threads. The first X, #3, is threaded 1,3,2,3. Each X is expanded in this way, thru out the entire pattern.

We have described the method of treadling summer and winter weave many times. Below is a diagram showing this method, also a second draft showing how to treadle half-units, to create a different effect. The lacey look of these trees is created by using these half-units as shown on the treadling draft.



X is tabby thrown alone
O pattern treadles
together, weft thrown

Each pair of half-units
makes a complete tread-
ling unit.

Treadling Draft:

Treadle 6-3 1/2 inches

1-2 units

2-1 "

3-1 Border

5-1

4-1

3-1

4-1

3-1

2-1

1-1 center

6-4 units

1-2

2-1

3-1

4-1

(3-1/2)

(2-1/2)

(3-1/2)

(2-1/2)

(3-1/2)

(2-1/2)

(1-1/2)

(2-1/2)

(3-1/2)

(2-1/2)

(1-1/2)

(3-1/2)

2-1 units

1-1 "

5-6 units

3-1

4-1

5-1

2-1

3-1

4-1

(1-1/2)

(2-1/2)

(3-1/2)

(2-1/2)

(1-1/2)

(2-1/2)

(3-1/2)

(2-1/2)

(3-1/2)

(4-1/2)

(3-1/2)

(4-1/2)

1-1

2-1

3-1

4-1

(1-1/2)

(2-1/2)

(1-1/2)

(2-1/2)

(3-1/2)

(2-1/2)

(3-1/2)

(4-1/2)

(5-1/2)

(1-1/2)

(2-1/2)

(3-1/2)

(4-1/2)

1-1

2-1

3-1

4-1

(1-1/2)

(2-1/2)

(3-1/2)

(2-1/2)

(3-1/2)

(4-1/2)

(5-1/2)

(1-1/2)

(2-1/2)

(3-1/2)

(4-1/2)

1-1

2-1

3-1

4-1

(1-1/2)

(2-1/2)

(3-1/2)

(2-1/2)

(3-1/2)

(4-1/2)

(5-1/2)

(6-1/2)

(7-1/2)

(8-1/2)

5-1 top of
small trees

(over)

At this point the small trees are completed. From here on they are eliminated by lifting the pattern treadle in those spaces, and weaving the background instead. This is similar to laid in weaving except that the same shuttle is drawn in and out of the warp.

Treadling for large tree tops.

(1- $\frac{1}{2}$) unit

(2- $\frac{1}{2}$)

(1- $\frac{1}{2}$)

(2- $\frac{1}{2}$)

(3- $\frac{1}{2}$)

(2- $\frac{1}{2}$)

(3- $\frac{1}{2}$)

(4- $\frac{1}{2}$)

(5- $\frac{1}{2}$)

(1- $\frac{1}{2}$)

(2- $\frac{1}{2}$)

(3- $\frac{1}{2}$)

(4- $\frac{1}{2}$)

(5- $\frac{1}{2}$)

1-1

2-1

3-1

4-1

2-1

3-1

4-1

5-1

(3- $\frac{1}{2}$)

(4- $\frac{1}{2}$)

(3- $\frac{1}{2}$)

(4- $\frac{1}{2}$)

5-1

3-1

4-1

5-1

4-1

5-1

For tips of trees

skip all but

center group for

2 units.

6-6 units

In the same manner

in which the small

trees were eliminated

now leave out the

large trees.

5-1

4-1

1-2

1-3

1-4

1-5

Throw shuttle clear across
for remainder of hanging

1-1

(2- $\frac{1}{2}$)

(1- $\frac{1}{2}$)

2-1

(3- $\frac{1}{2}$)

(4- $\frac{1}{2}$)

(5- $\frac{1}{2}$)

(4- $\frac{1}{2}$)

3-1

4-1

5-1

4-1

3-1

(5- $\frac{1}{2}$)

(4- $\frac{1}{2}$)

(3- $\frac{1}{2}$)

(2- $\frac{1}{2}$)

(1- $\frac{1}{2}$)

2-1

1-1

6-3 units

1-2

2-1

3-1

5-1

(4- $\frac{1}{2}$)

(3- $\frac{1}{2}$)

4-1

3-1

2-1

1-1

2-1

3-1

4-1

(3- $\frac{1}{2}$)

(4- $\frac{1}{2}$)

5-1

3-1

2-1

1-2

6-3 $\frac{1}{2}$ inches.