

To ~~the~~ with best wishes, ~~the~~

rs.
eer
fic.

Northwest Weavers

Volume I

Number 4



Price 25 Cents

My life is but a weaving
Between my Lord and me,
I cannot choose the colors
He worketh steadily.
Oft times He weaveth sorrow
And I in foolish pride
Forget He sees the upper
And I the under side.

Not till the loom is silent
And the shuttles cease to fly,
Shall God unroll the canvas,
And explain the reason why.
The dark threads are as needful
In the weaver's skillful hands,
As the threads of gold and silver
In the pattern He has planned.

ANONYMOUS

CONTRIBUTED BY MISS MARIETTA HILTON

Northwest Weavers published four times a year
at 25 cents a copy. For subscriptions send
one dollar to:

Northwest Weavers
Care of Ruth Busfield, Secretary
Monroe, Washington

Include sales tax in State of Washington

TACOMA GUILD CELEBRATES FOUNDERS' DAY

The Tacoma Weavers Guild honored Mrs. Margaret Bergman and its Founders at a tea and Exhibit when they celebrated their sixth anniversary on November 13th on the same seventh floor of Fisher's, Tacoma where Mrs. Bergman first held classes and where the idea of the formation of a Guild was conceived. Both Kitsap County Weaving and Spinning and Seattle Weavers Guilds accepted invitations to attend and exhibit.

There was much remembering "times when." They recalled how it all came about, - how in 1933 Miss Marietta Hilton, who was weaving at her home, attended the first weaving show at the Bon Marche, where Mrs. Bergman and her loom were the center of interest. Then she spent some time in the Bergman home, living with weaving. Next Marietta was instructing an eager group to weave on little table looms in the Art Needlework Department of Rhodes Bros. store in Tacoma. In the summer of 1933 Miss Hilton put on a hobby show where Mrs. Bergman brought her looms and demonstrated multi-harness weaving to intensely interested audiences. Mrs. Bergman returned to Poulsbo, but she was not forgotten by those who wove with greater zest than ever at the little table looms.

In July 1934, the Misses Maud Ludwig and Laura Judd spent ten days at Mrs. Bergman's home, weaving on the old, big first loom, and the more modern looms developed by Mrs. Bergman, and now so widely known as "Bergman Looms." They returned to Tacoma inspired and enthusiastic. Then Mrs. E. J. Bridewell and Mrs. C. G. Jennings graduated from the table loom to treadle looms when they purchased their first Bergman looms. Poulsbo seemed a bit too far away for the many who had now the urge to weave on foot-power looms- hence the question of how to bring treadle and multi-harness weaving to these enthusiasts became increasingly important.

In October, 1935, many consultations were held between the Misses Judd and Ludwig and Mrs. Jennings endeavoring to draw up plans for classes. They were finally successful in obtaining the Seventh floor of Fisher's Dept. Store in Tacoma, and Mrs. Bergman agreed to teach the classes. Thus multi-harness weaving was started in Tacoma. Enthusiasm was at a high pitch and the Tacoma Weaver's Guild was formed on Nov. 5, 1935 with the following officers and charter members:

President - Mrs. C. G. Jennings
Sec'y Treas. - Mrs. Thrina Baker
Publicity - Miss Laura Judd
Pattern Committee - Mrs. Bergman
Miss Marietta Hilton
Mr. Roland Borhek
Miss Blanche Stevens
Miss Maud Ludwig, Ch.

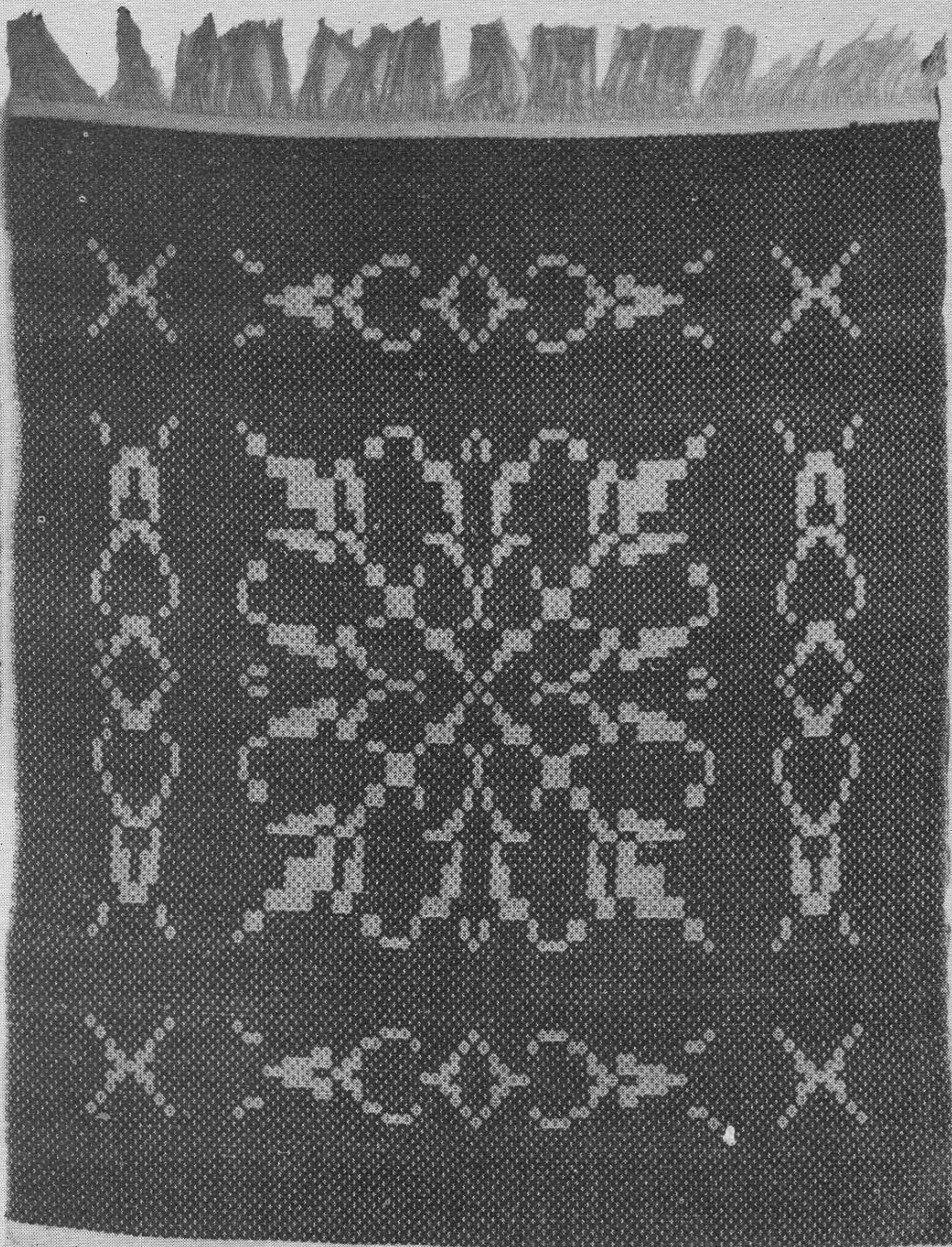
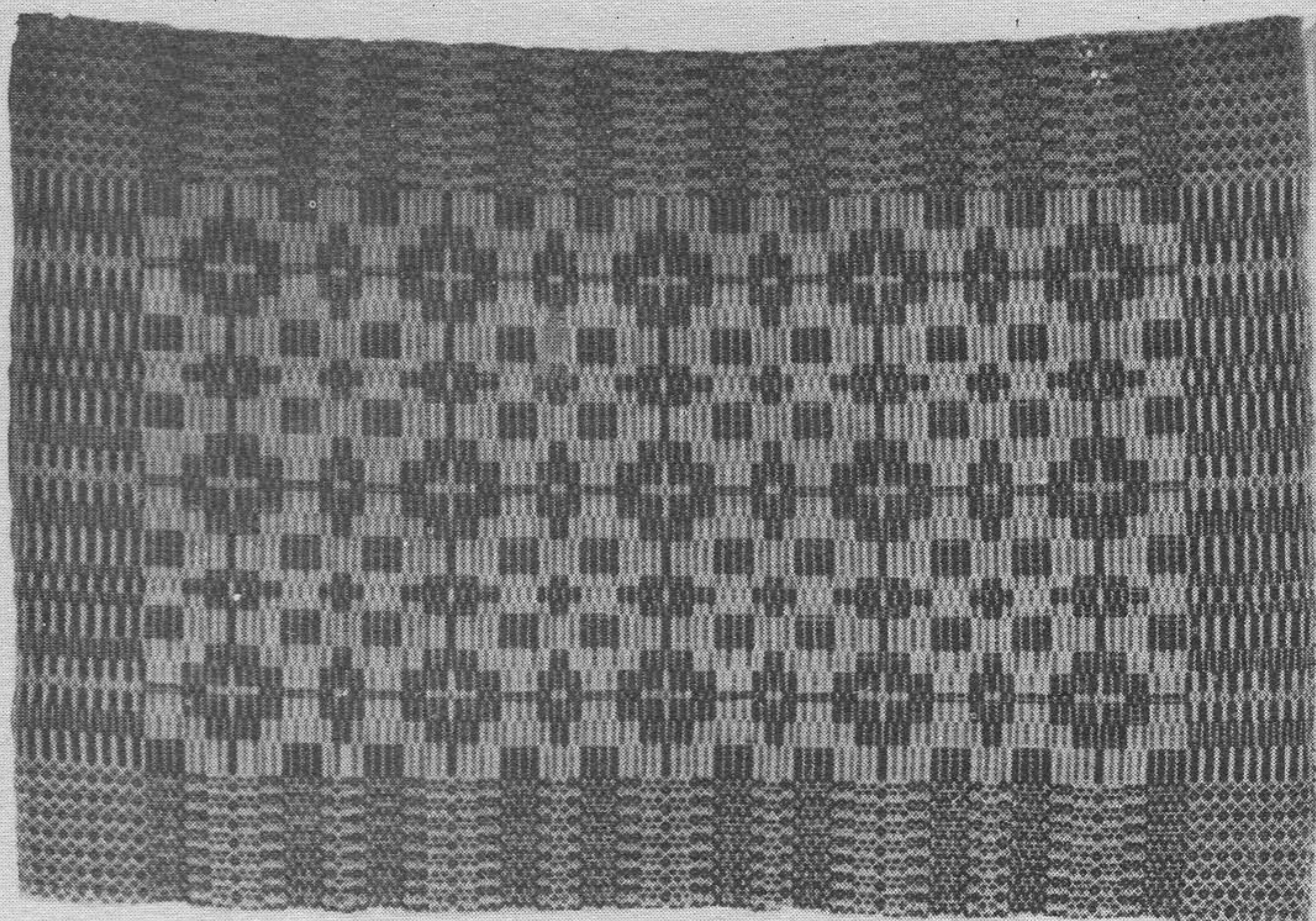
Other charter Members:

Mrs. Margaret Gould	Miss Lucy Cordiner
Mrs. H. A. Magill	Miss E. F. Moore
Mrs. E. J. Bridewell	Miss Cora Adams
Mrs. James Lyon	Mrs. C. S. Miller
Mrs. E. H. Neyman	

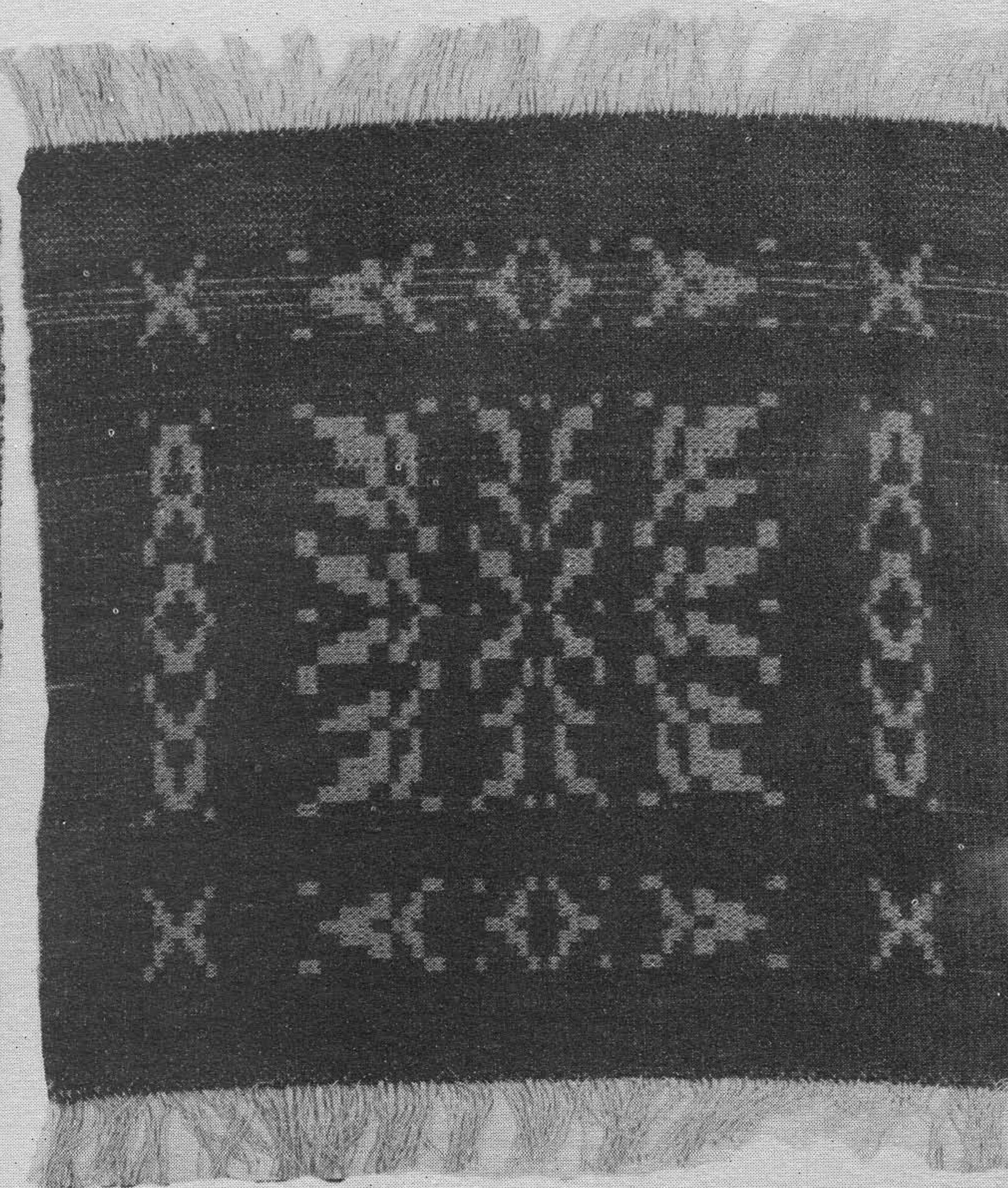
Life Member - Mrs. Bergman

The aims and purposes of the Guild were "To further the art of weaving in the State of Washington" and "To aid those interested in weaving, both the experienced and inexperienced."

Thus it was that the Tacoma Weaver's Guild remembered to honor its Founders in November of 1941.



No. 1	Upper left
No. 2	Upper right
No. 3	Lower left
No. 4	Lower right



CRACKLE WEAVE -- BY MARGARET BERGMAN

Materials:

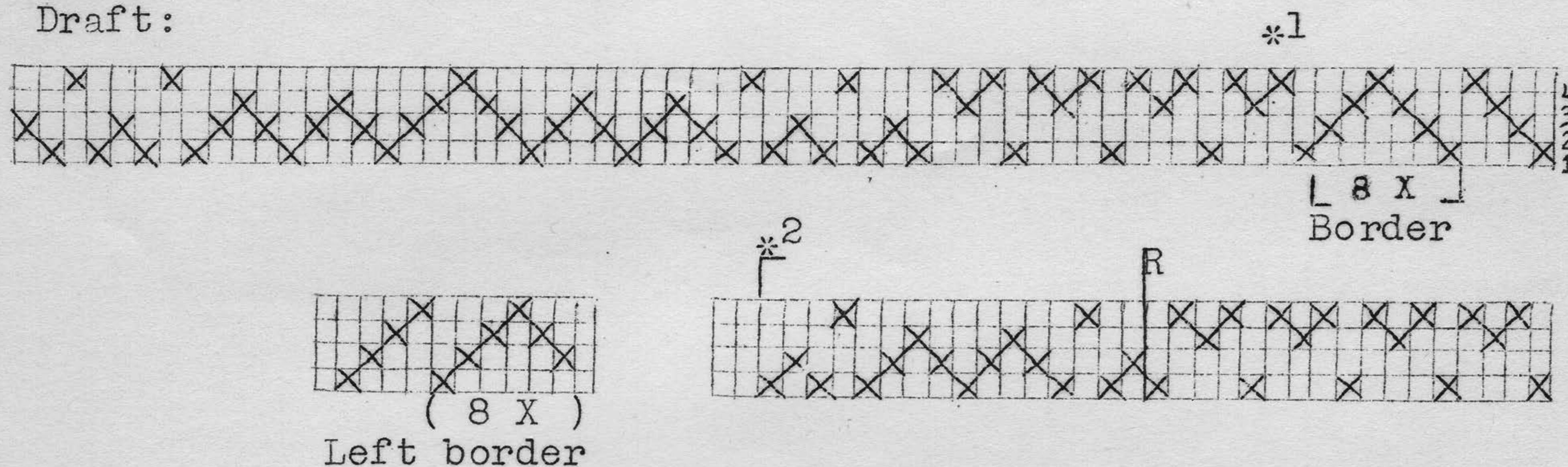
Warp 20/2 cotton

Weft - Perle cotton #10

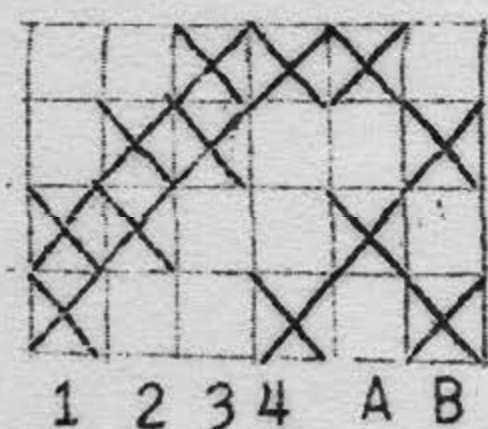
Tabby - Same as Warp

Reed - #20, set 2 threads to a dent.

Draft:



Tie-up



Threading:

Thread border

Then from *¹ to *² as many times as desired.Then from *¹ to R

Then left border.

Treadling is same as for any overshot pattern, that is, pattern treadle followed by tabby.

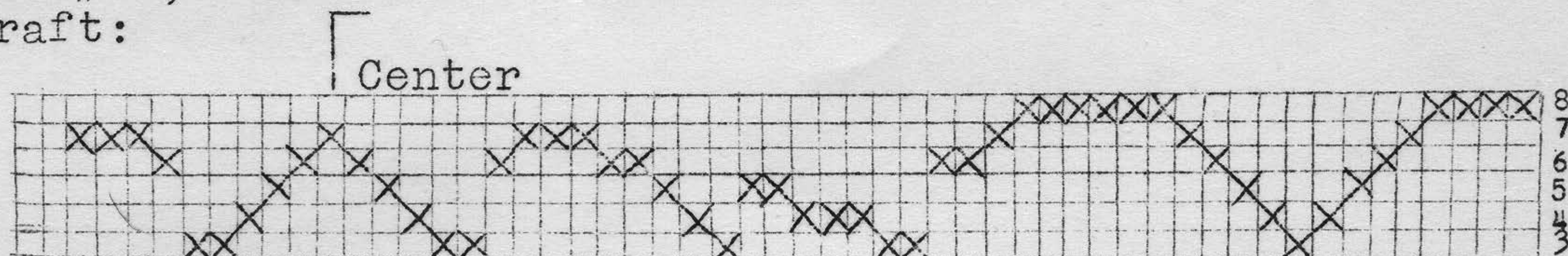
Treadling:

1		3 - 10X	2 - 4X
2		2 - 8X	1 - 6X
3	8 X	1 - 8X	2 - 4X
4	Border	4 - 2X	Repeat as desired
3		1 - 8X	1 - 1X
2		2 - 8X	Border in reverse.
1		3 - 10X	

SUMMER AND WINTER WEAVES

The summer and winter weaves with which most weavers are familiar is that which has a small diamond back ground. In this pamphlet we wish to show two others which are equally interesting, but possibly less frequently used. In all three techniques, the threading is exactly the same. For our example we are using a pattern of Mrs. Margaret Bergman on 8 harnesses, called Fantasy. Below is given the draft for all three and materials for the 1st two.

Warp...20/2 cotton
 Weft...Perle cotton #10
 Tabby...Basting thread
 Reed...#15, set 2 threads to a dent
 Short draft:

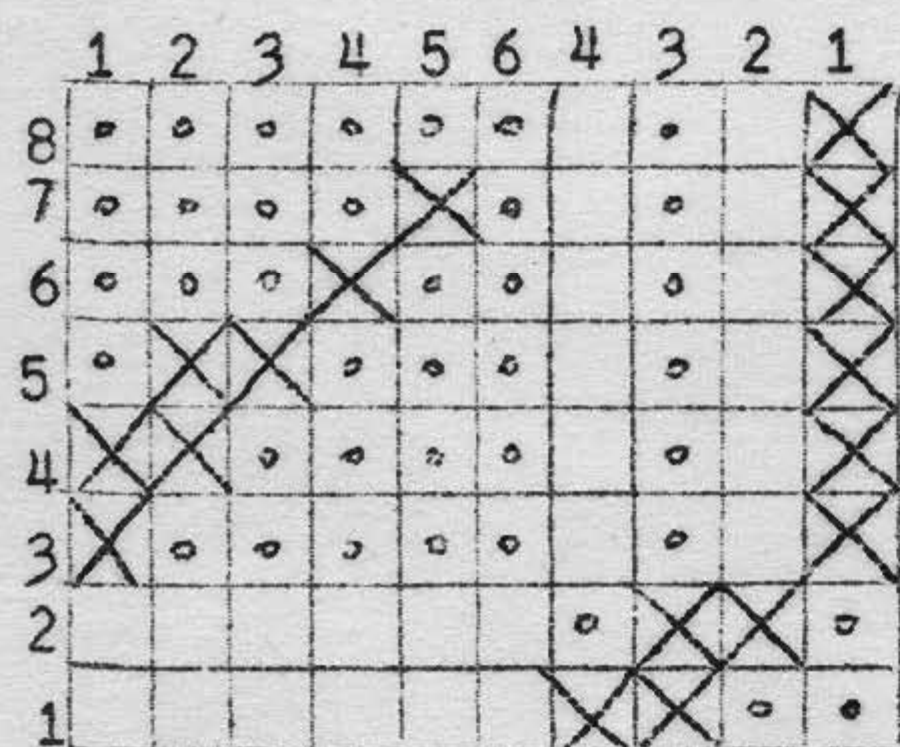


Long draft: In threading, each X on the short draft is expanded into a unit of four threads. The first X, #8, on the short draft is threaded, 1-8-2-8. The entire pattern is expanded in this way.

Below is the tie-up and treadling for the diamond background, with which we are most familiar.

Tie-up.

X is tied to the upper lamms.
 o is tied to the lower lamms.



Treadling: Each unit is treadled in 8 steps. The first unit, using pattern treadle #6 is shown in detail below.

1st step, Tabby	1- throw tabby thread	<div style="border-left: 1px solid black; padding-left: 10px;"> <p>One unit</p> <p>The same pattern treadle is used thru out each unit.</p> </div>
2nd	" 2- & pattern #6, throw colored weft	
3rd	" 3- throw tabby	
4th	" 4- & pattern #6, throw colored weft	
5th	" 1- throw tabby	
6th	" 4- & pattern #6, throw colored weft	
7th	" 3- throw tabby	
8th	" 2- & pattern #6, throw colored weft	

Treadling draft:

Pattern #6-1 $\frac{1}{2}$ inches

5-1 unit

4-1

3-1

2-1

1-1

2-1

3-1

4-1

5-1

6-7

5-1

4-2

1-2

2-3

3-2

1-1

2-1

3-1

4-2

5-3

4-1

1-2

2-1

3-1

4-1

5-1 center

FANTASY, WITH CORDED BACKGROUND

In this technique, which has a corded background, the threading remains the same but the tie-up must be changed. It will be noticed that the "Key", or pattern treadles are tied the same, the change being made in the tabbies.

Tie-UP.

X is tied to the lower lamms.

o is tied to the upper lamms.

	1	2	3	4	5	6	A	B
8	o	o	o	o	o	o	o	X
7	o	o	o	o	X	o	o	X
6	o	o	o	X	o	o	o	X
5	o	X	X	o	o	o	o	X
4	X	X	o	o	o	o	o	X
3	X	o	o	o	o	o	o	X
2	o	o	o	o	o	o	X	o
1	X	X	X	X	X	X	X	o

Treadling: Each unit is treadled in three steps.

1st step	Tabby B- throw tabby
2nd	Tabby A- throw tabby
3rd	Pattern treadle- throw colored weft.

Treadling draft: The same treadling draft is used as in the previous article, however if the #10 weft is used the number of units must be doubled to make the pattern square.

FANTASY IN DOUBLE FACED WEAVE.

The third type is called double faced summer and winter. It has the appearance of being woven on opposites and although a bit more complicated, is well worth the trouble. Fourteen treadles are required for this 8 harness pattern.

Tie-up:

	1	2	3	4	5	6	7	8	9	10	11	12	A	B
8	X		X		X		X		X		X			
7		X		X		X		X		X		X		
6	X		X		X		X		X		X			
5		X		X		X		X		X		X		
4	X		X		X		X		X		X			
3		X		X		X		X		X		X		
2	X		X		X		X		X		X			
1		X		X		X		X		X		X		
	C		D		E		F		G		H			

As will be noticed in the draft, treadles 1,3,5,7,9 & 11 carry the key tie-up, the same as the other two techniques. A further study of the draft will show that treadle 2 is the opposite of treadle 1, that 4 is the opposite of 3, and so on. We have called these pairs C,D,E,F,G,H on the draft and these letters will be used in the treadling draft.

Treadling: two yarns of different colors but of the same weight are essential in this technique. The example shown was woven in rose and gray wool so we are using those colors in the description. The units of treadling are in pairs the same as the tie-up, that is treadles 1 & 2 are the first pair, treadles 3 & 4 the second pair and so on. To treadle any pair into a unit, the two treadles are used first with tabby A, then with tabby B, making 4 steps. In the example below we have used pair C.

1st step..	pattern	treadle 1 &	tabby A,	throw rose thread	one unit
2nd step..	"	"	2 &	" A, throw gray thread	
3rd step..	"	"	1 &	" B, throw rose thread	
4th step..	"	"	2 &	" B, throw gray thread	

In this piece the rose thread is always thrown when the odd numbered treadle is used and the gray thread is always thrown with the even treadle.

Treadling draft: We have given the treadling below, using the letters signifying the pairs, to be used in each unit. Always start with the first treadle of the pair.

Pair H- $1\frac{1}{2}$ inches
 G- 1 unit
 F- 1 "
 E- 1 "
 D- 1 "
 C- 1 "
 D- 1 "
 E- 1 "
 F- 1 "
 G- 1 "
 H- 7 "

G- 1 unit
 F- 2 "
 C- 2 "
 D- 3 "
 E- 2 "
 C- 1 "
 D- 1 "
 E- 1 "
 F- 2 "
 G- 3 "
 F- 1 "

C- 2 units
 D- 1 "
 E- 1 "
 F- 1 "
 G- 1 " Center