

To ~~my~~ with much love ~~to~~

# Northwest Weavers

Volume I

Number 3



Price 25 Cents

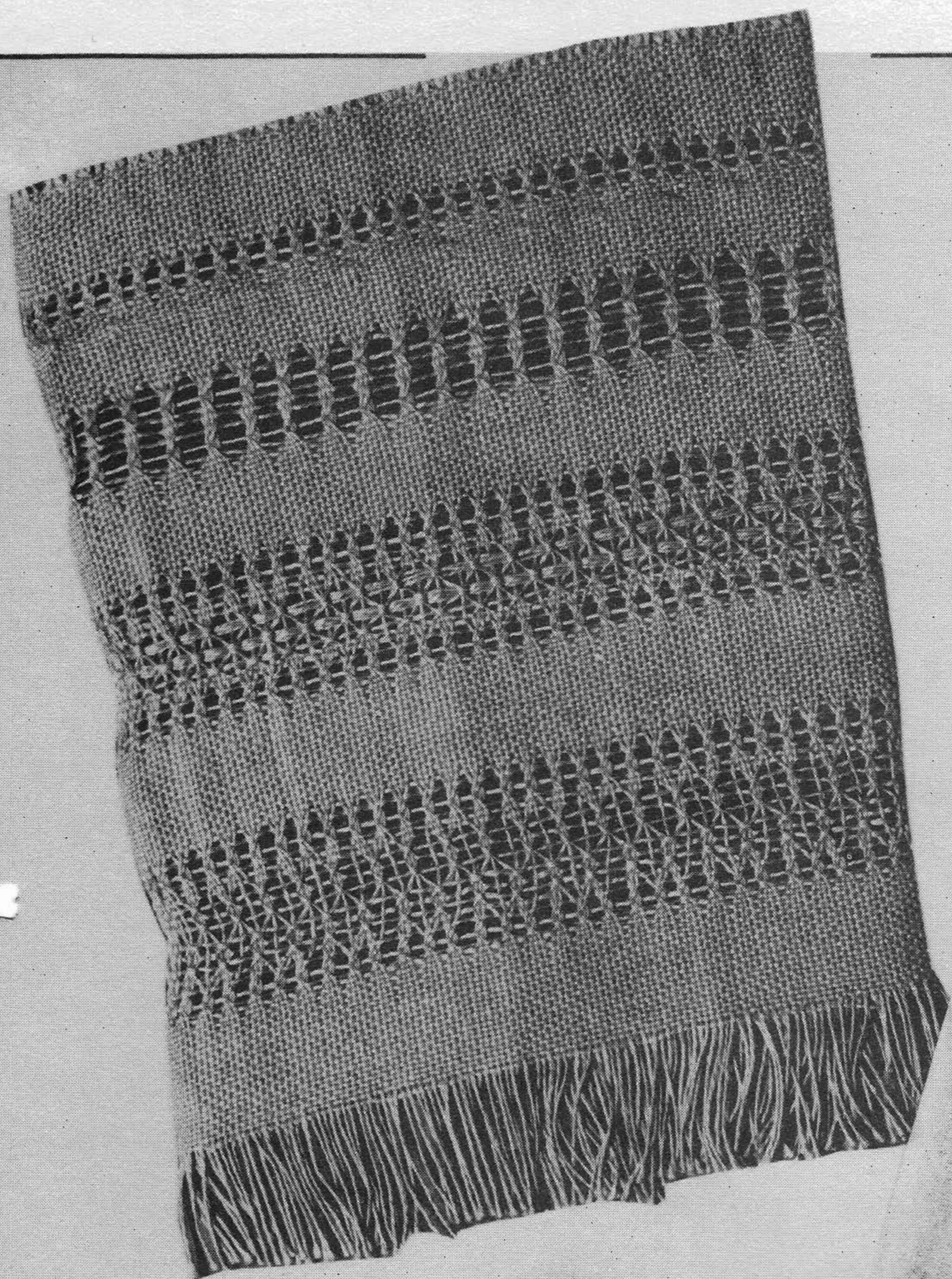


Northwest Weavers published four times a year  
at 25 cents a copy. For subscriptions send  
one dollar to:

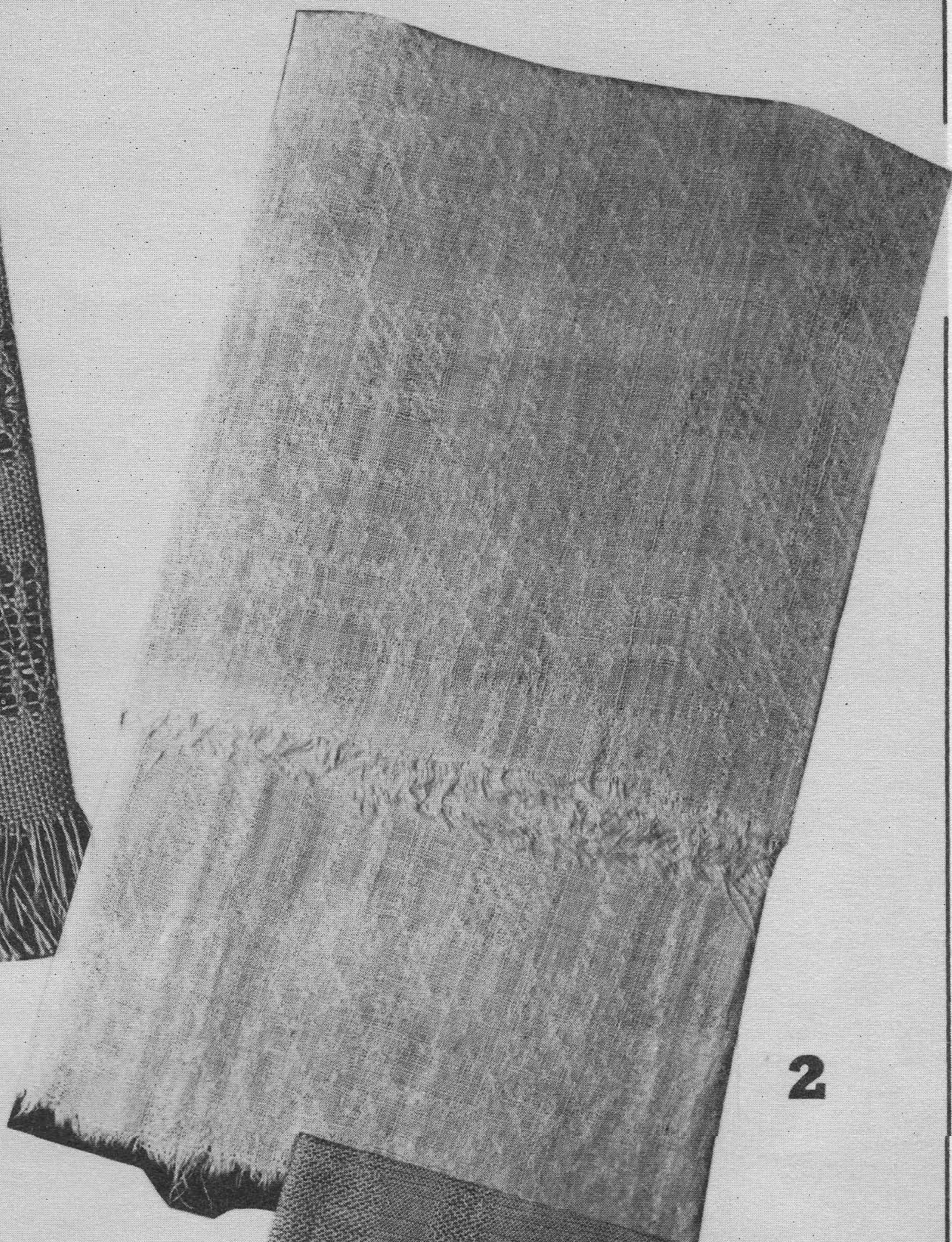
Northwest Weavers  
Care of Ruth Busfield, Secretary  
Monroe, Washington

Include sales tax in State of Washington

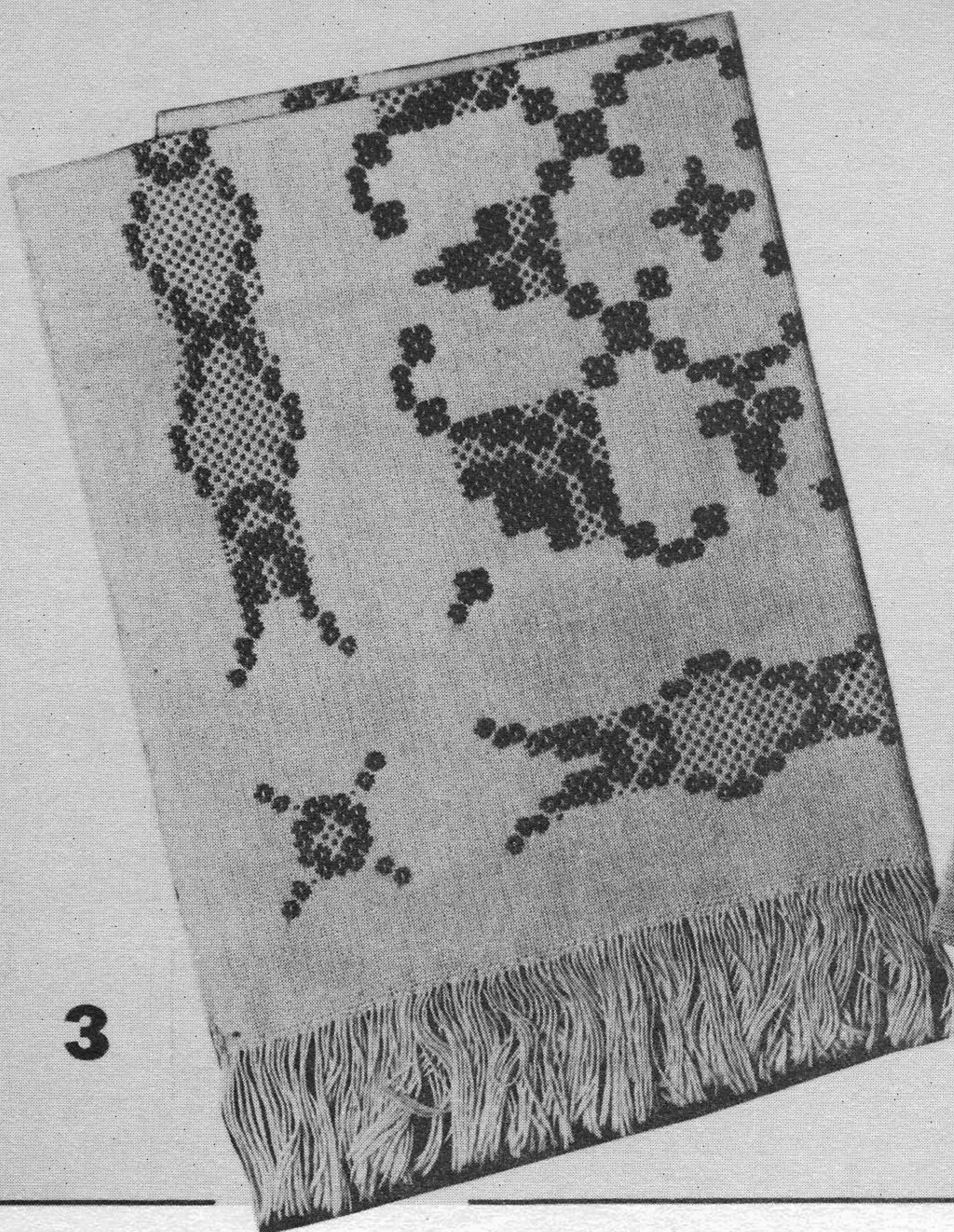




1



2



3

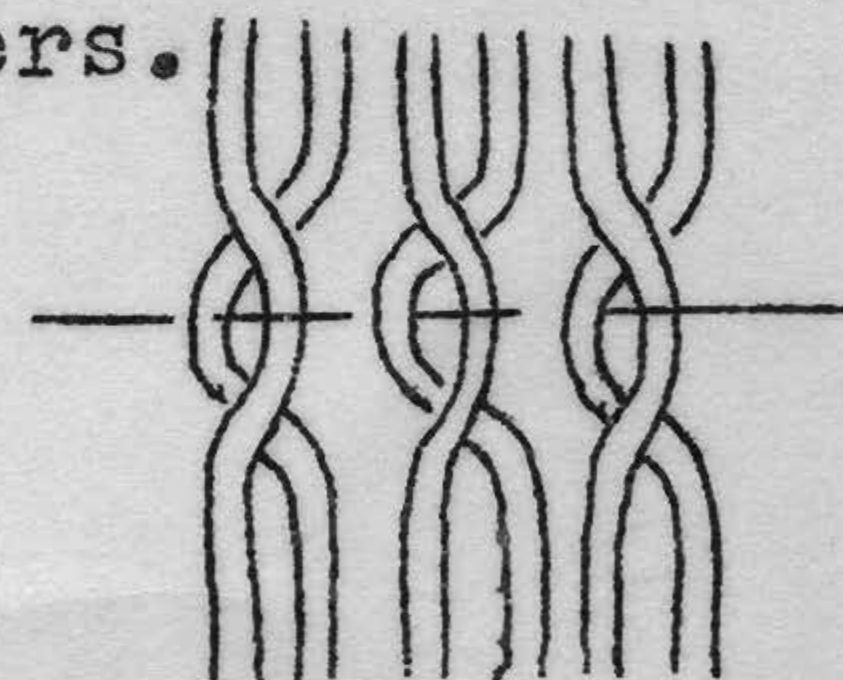


4



The finishing of a towel or place mat may sometimes be its undoing, and no matter how beautiful the weaving may be, the borders fail to add that something which gives the article a complete look. To fill this need, Mrs. Bergman has worked out several designs in hemstitching to be done on the loom, some simple enough to merely "finish", and others elaborate enough to claim the chief interest in the woven article.

The first one is a simple type, used very satisfactorily on fine linen luncheon sets in which the design is put in in lace weave. After sufficient plain weaving is done to provide a hem of desired width, close the shed and pick up 4 threads, with your fingers. Cross the 2 left hand threads over the 2 right hand threads. Pass the shuttle under the 2 right hand threads, which now appear on the left. Continue this procedure across the entire width, picking up 4 threads each time. Send the shuttle back to the right on the 2 & 4 shed and beat hard. Then continue plain weaving. When the article is off the loom the edge is turned back to this hemstitching and hemmed down.



The second example in the picture is similar to the first. Leaving shed closed, pick up 6 threads. Cross the 3 left hand threads over the 3 right hand threads and pass the shuttle under the 3 right hand threads which now appear on the left, and pull thru. Continue across and beat hard. Put in 3 tabbies and repeat the first step (crossing 3 threads over 3).

The third design is a little more elaborate and is called the cobweb design. For hemstitching let us call the 1 & 3 shed B, and the 2 & 4 shed A.

Step 1. Weave plain border for hem.

Step 2. Do the technique described in number one.

Step 3. Put in three rows of tabby on A,B,A.

Step 4. Make a shed on B, pick up 6 threads on top shed and pull shuttle thru. these 6. Go back and pick up the last 3 of those, add 3 new ones and pull shuttle thru. Continue across, picking up 6 threads each time, 3 old and 3 new.

Step 5. Put tabby thru on B, being sure to catch out side thread.

Step 6. Pick up 6 threads and proceed as step 4. These will be the same groups as in step 4.

Step 7. Make shed on A. You will now find the threads arranged in pairs, alternating with single threads. Pick up enough threads at the beginning so that when you proceed with the technique as in 4, that is 3 new and 3 old, you will split a pair each time. Continue across. This time you are working from the left.

Step 8. Put tabby thru on A, being sure to catch outside thread.

Step 9. Proceed as in step 7, again from the left.

Step 10. Proceed as in step 7, this time from the right.

Step 11. Tabbies A,B,A.

Step 12. Repeat step 2.

The fourth example is worked exactly like the third design except for two changes. In step 5, put tabby thru on A, instead of B. Then in step 8, put tabby thru on B instead of A.



## BRONSON WEAVE TABLE CLOTH ON FIVE HARNESSSES.

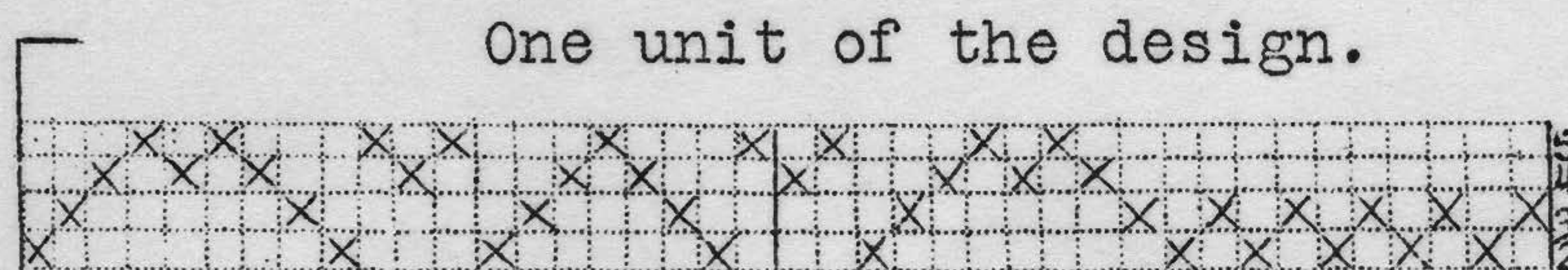
## Materials:

Warp...50/2 linen

Weft...50/2 linen

Reed...#20, set 2 threads to a dent.

## Short Draft:



## Tie-up

	1	2	3	4	A	B	
	o	o	o	X	o	X	5
	o	o	X	o	o	X	4
X-upper lamms	o	X	o	o	o	X	3
o-lower lamms	X	o	o	o	o	X	2
	X	X	X	X	X	o	1

Long Draft: In threading Bronson weave, each X on the short draft is expanded into a unit of 4 threads, thus, the first X would be threaded, 1,3,1,3. The second X, 1,2,1,2, and so on thru out the entire pattern. If this pattern is set up with fine linen, at 40 threads to the inch, this unit of 160 threads will be 4 inches wide. Repeat this pattern then, as many times as necessary to produce desired width.

## Treadling:

Each unit of Bronson weave is treadled in 4 steps;

Tabby B

Pattern treadle

one unit.

Tabby B

Pattern treadle

B is always the tabby

## Treadling draft for design:

Treadle 2-1 unit	5x	4-1	4-1
1-1		3-1	3-1
2-1		4-1	4-1
3-1		1-1	1-1
4-1		2-1	2-1
3-1		3-1	3-1
4-1		4-1	4-1
3-1		3-1	3-1
2-1		2-1	4-1
1-1		1-1	3-1

This draft was taken from a scrap of table cloth more than a hundred years old, belonging to Mrs. F. A. Hubbert, of Seattle, Wash. It is delicate in design and well worth reproducing. It can also be used for towels in slightly coarser linen.



# POINSETTA, Laid in Summer and Winter on eight harnesses

3.

By Margaret Bergman, Poulsbo, Washington

## Materials:

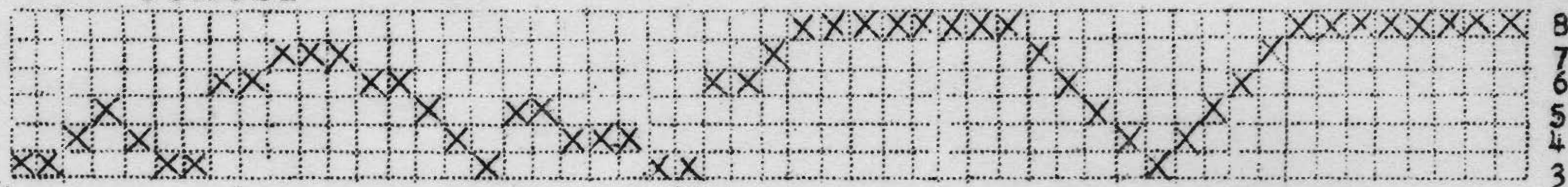
Warp...20/2 cotton

Weft...Perle cotton #10

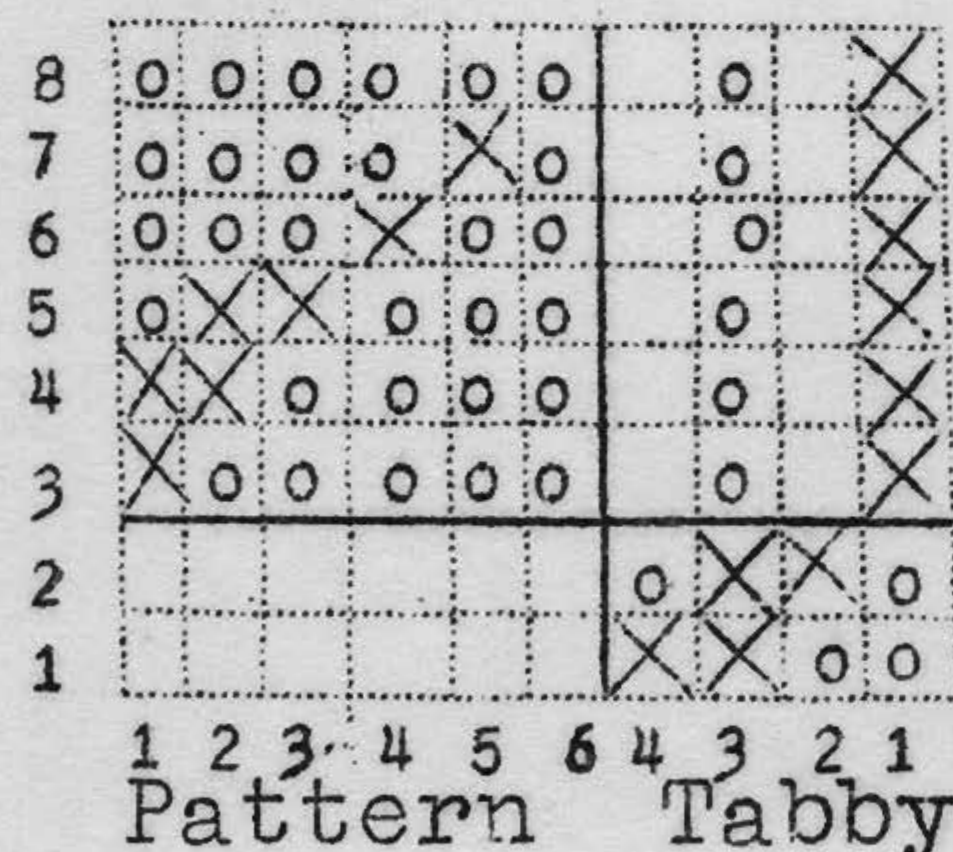
Tabby...20/2 cotton

Reed...#16, set 2 threads to a dent

Short Draft: Center



Tie-up: X is tied to Lower Lamms, O is tied to Upper Lamms



Long Draft: in threading, each X on the short draft is expanded into a unit of 4 threads. The first unit #8 is threaded 1-8-2-8, which is continued for all 8 units. The entire short draft is expanded in this way.

Treadling: Each unit is treadled in 8 steps. The first unit, using pattern treadle #5 is shown in detail below, showing where the weft is laid in.

- |                 |    |                               |
|-----------------|----|-------------------------------|
| 1st step, Tabby | 1- | thrown alone                  |
| 2nd             | "  | 2- & pattern #5, weft laid in |
| 3rd             | "  | 3- thrown alone               |
| 4th             | "  | 4- & pattern #5, weft laid in |
| 5th             | "  | 1- thrown alone               |
| 6th             | "  | 4- & pattern #5, weft laid in |
| 7th             | "  | 3- thrown alone               |
| 8th             | "  | 2- & pattern #5, weft laid in |

One unit of treadling

The same pattern treadle is used thru out each unit.

On sheds where tabby & pattern treadles are used together, it will be noticed that groups of warp threads appear to create the pattern. Instead of sending a shuttle of colored weft thru, these groups are picked up and the weft is laid in. It is better to use separate bundles of thread for each group not closely adjacent to another group, avoiding long skips. You will be working from the wrong side. This of course is a much slower process but such delightful effects can be had, that it is well worth the additional time involved. Of course pieces can be woven on the same warp, in conventional summer and winter style.

## Pattern Draft:

A & B tabby for 1 inch

Pattern #5-1 unit

4-1

1-1

2-1

3-1

2-1

1-1

4-1

5-1

A&B tabby 1 inch

5-1 unit

4-2

3-2

2-3

1-2

3-1 unit

2-1

1-1

4-2

5-3

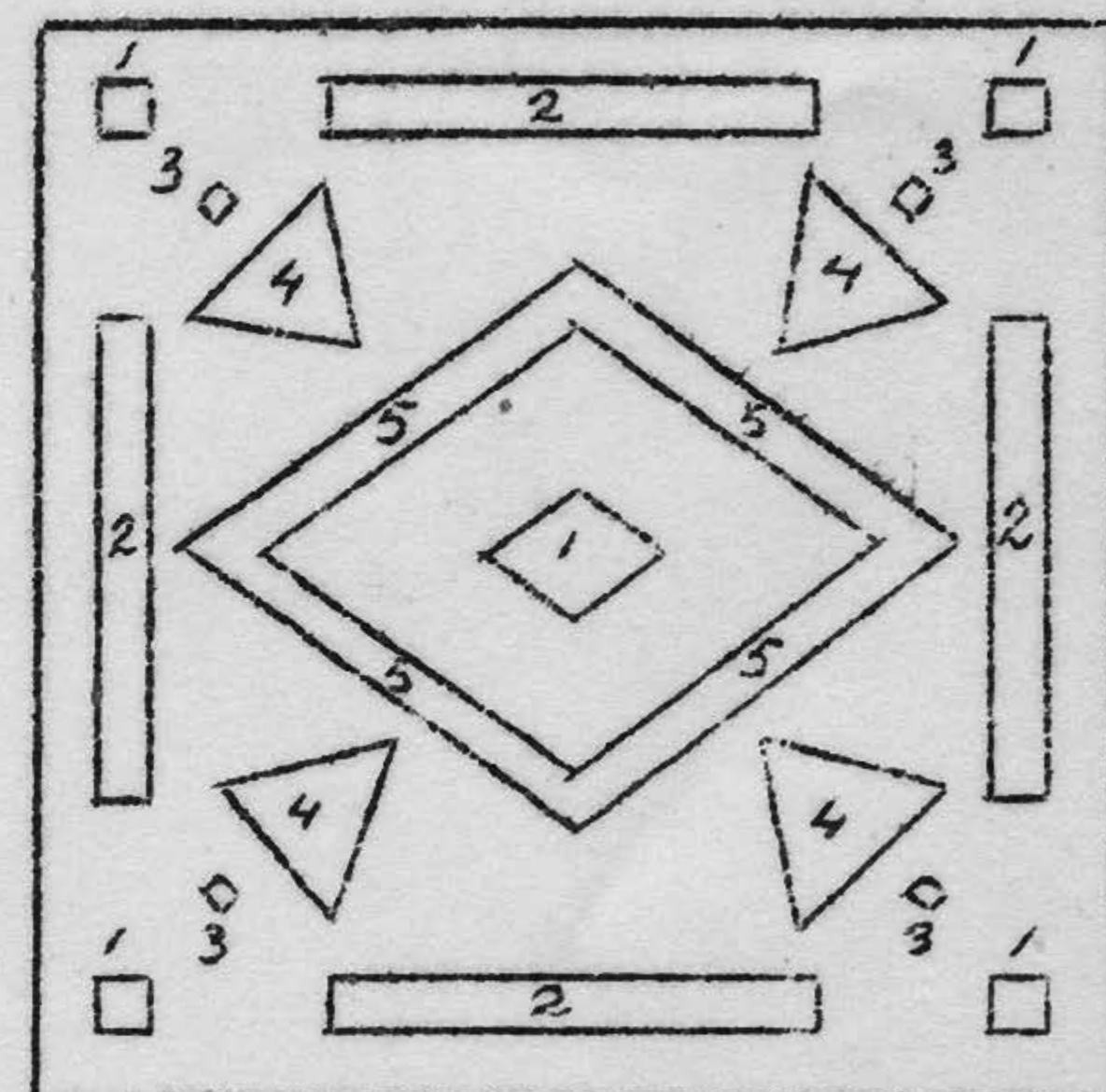
4-2

3-2

2-1

1-1

Center



## Color chart:

1- tan

2- light green

3- brown

4- henna

5- dark green



By Margaret Bergman, Poulsbo, Wash.

## Materials:

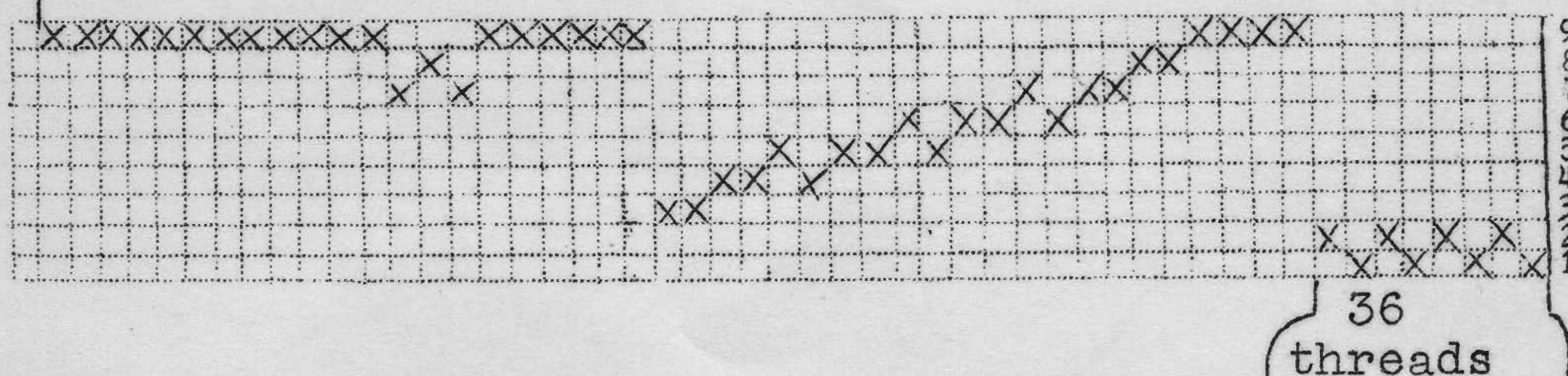
Warp...fine silk or linen

Weft...silk and metallic, double spooled

Reed...#18, set 2 threads to a dent.

Short draft;

Center



## Tie up

1	2	3	4	5	6	7	8	9	10	A	B	
X	X	X	X	X	X	X	X	X	X	X	X	12
X	X	X	X	X	X	X	X	X	X	X	X	11
X	X	X	X	X	X	X	X	X	X	X	X	10
X	X	X	X	X	X	X	X	X	X	X	X	9
X	X	X	X	X	X	X	X	X	X	X	X	8
X	X	X	X	X	X	X	X	X	X	X	X	7
X	X	X	X	X	X	X	X	X	X	X	X	6
X	X	X	X	X	X	X	X	X	X	X	X	5
X	X	X	X	X	X	X	X	X	X	X	X	4
X	X	X	X	X	X	X	X	X	X	X	X	3
X	X	X	X	X	X	X	X	X	X	X	X	2
X	X	X	X	X	X	X	X	X	X	X	X	1
D	L.P.									T		

D -Damask

L.P.-Lace Pattern

T.-Tabby

Threading the long draft; the one-inch border is threaded on harnesses 1 and 2 only, using the 36 threads.

Each X of the Damask, 9 on draft, is expanded into a unit of 4 threads and threaded on harnesses 12, 11, 10 and 9.

Each X of the Lace Weave (everything except 9), is expanded into a unit of 6 threads. The first unit #8 is threaded 1,8,1,8,1,2. The entire lace pattern is expanded in this way.

## Treadling:

Border is treadled on tabbies A and B for  $2\frac{1}{2}$  inches.

A hemstitching design is woven in, see article 1, of this issue.

Damask is treadled on harnesses 1,2,3,4 in succession, for each unit.

Lace is treadled in six steps for each unit as shown below:

1st step	B tabby	
2nd	"	Pattern treadle
3rd	"	B tabby
4th	"	Pattern treadle
5th	"	B tabby
6th	"	A tabby

One unit

The same pattern treadle is used thru the entire unit

## Treadling draft for pictured piece:

Border  $2\frac{1}{2}$ " on A and B

Hemstitching

Plain tabby  $1\frac{1}{4}$ " on A and B

Damask 4 units on treadles 1,2,3,4

Treadle #5--2 units

6--2

7--1

6--1

7--2

8--1

7--1

8--2

9--1

8--1

9--2

10--2

Damask 6 units-treadles 1,2,3,4

Treadle #6--1 units

5--1

6--1

Damask for 4 inches, Center.

This piece when woven with the metallic tabby, makes an interesting variation from the usual lace weaves. This pattern, with a different tie up was shown in the Weaver, April-May 1941.