

To ~~Edgar~~, lovingly from ~~Chie~~

Northwest Weavers

Volume I

Number 2



Price 25 Cents

In this second issue of Northwest Weavers, we are presenting two patterns for lace luncheon sets. These have been found simple to make and very usable. One can be done on four harnesses while the other requires eight. A hem-stitched edge enhances their beauty and gives them a finished look.

The six-harness tree pattern has a corded effect background which may be new to many weavers. This is good for mats, using a colored weft or practical for toweling in either colored or white weft.

The Washington dogwood is a pattern originated by Mrs. Marjorie G. Morse, a pupil of Mrs. Margaret Bergman. With fine materials and delicate colors this pattern makes a beautiful table cloth. Enlarged and with materials specified in the article, it would be suitable for a bed spread.

This pamphlet is published four times a year at 25¢ a copy. For subscription, send one dollar to:

Northwest Weavers
Care of Ruth Busfield, Secretary
Monroe, Washington

Correction:

In Vol. I - #1 pattern No. 4, the damask is threaded in the succession of 12-11-10-9 instead of 9-10-11-12.



No. 1

No. 2

No. 3

No. 4

Luncheon set

LACE WEAVE on four harnesses

Materials:

Warp...40/2 linen

Weft...40/2 linen

Reed...#16, set 2 threads to a dent

Ends... 432,

Plain tabby 42 threads

Side border 38 "

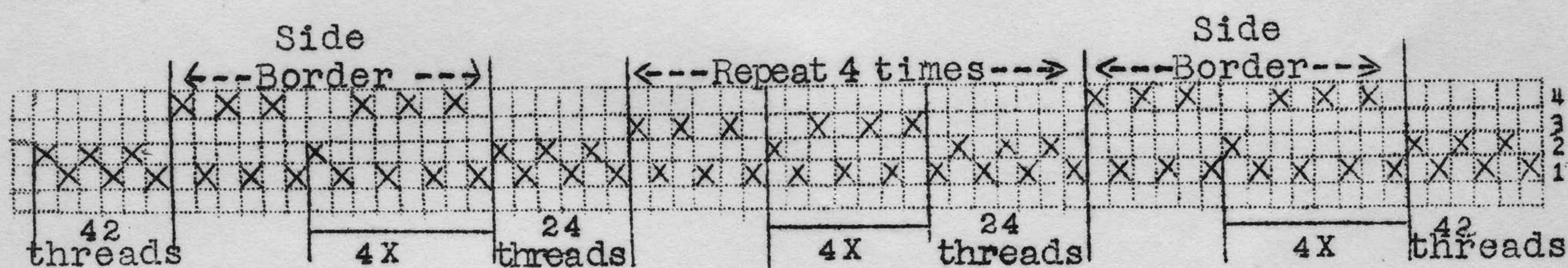
Pattern 248 "

Plain tabby 24 "

Side border 38 "

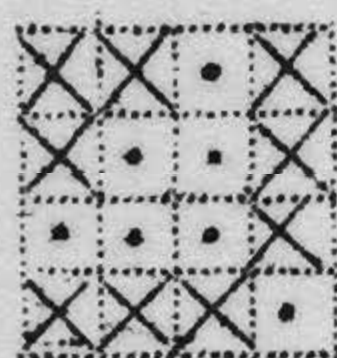
Plain tabby 42 "

Draft:



Tie up:

1 2 A B



Treadling:

Treadle B & A for plain tabby hem.

Treadle	B	
"	1	
"	B	Repeat 5X
"	1	unit one
"	B	
"	1	
"	B	
"	A	

Treadle	B	
"	2	
"	B	Repeat 5X
"	2	unit two
"	B	
"	2	
"	B	
"	A	

Treadle B & A--24 times

Treadle B & A--24 times

Weave unit one for end border

Weave unit two to desired length

Repeat unit one.

For the napkins, use unit two to make a lace design in corners only.

LACE WEAVE luncheon set on eight harnesses

By Margaret Bergman, Poulsbo, Washington

Materials:

Warp...40/2 linen

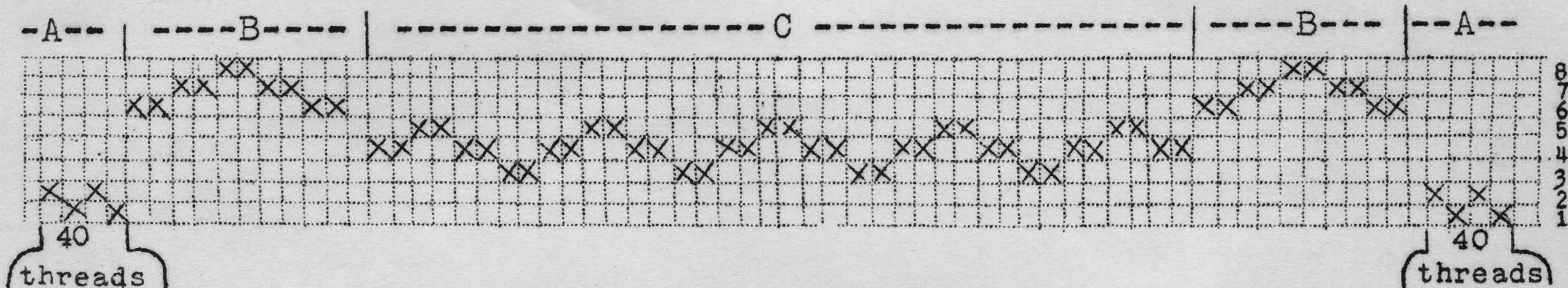
Weft...40/2 linen

Reed...#16, set 2 threads to a dent

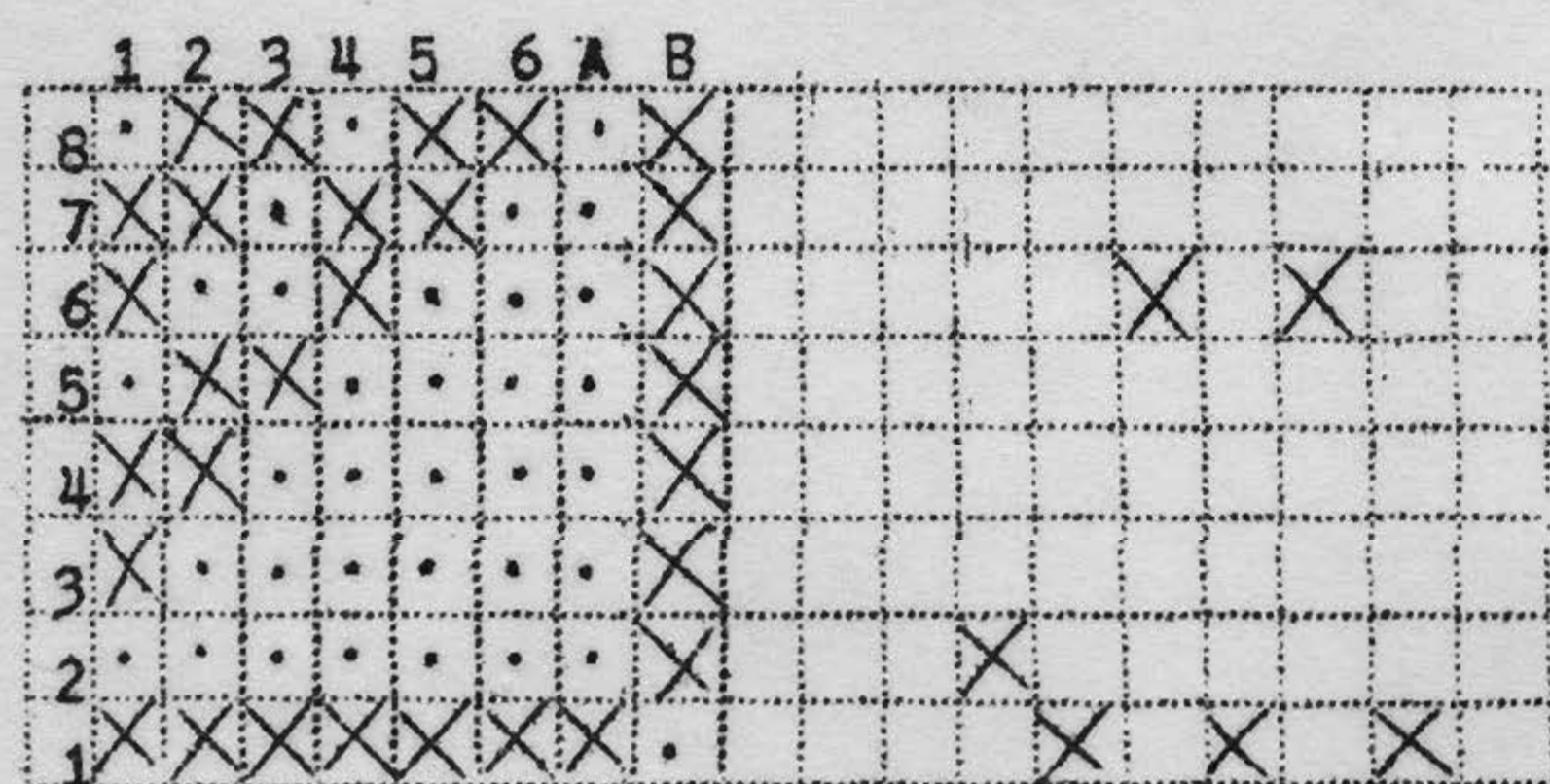
Ends...428

A..Plain border	40 threads
B..Side pattern	60 "
C..Center	228 "
B..Side border	60 "
A..Plain border	40 "

Short draft:



Tie up



Detail

Long Draft: In threading, each X on the short draft is expanded into a unit of six threads, as shown on the detail draft. The plain border is threaded on harnesses 1 and 2 only, using 40 threads for each border.

X is tied to the upper lamms in the tie up.

Treadling: Each unit of Lace Weave is treadled in six steps, as shown.

1st step	B tabby
2nd "	Pattern treadle
3rd "	B tabby
4th "	Pattern treadle
5th "	B tabby
6th "	A tabby

One unit

The same pattern treadle is used thru the entire unit.

Treadles A and B are used for plain tabby.

Treadling:

Pattern #3-2 units	
2-2 "	end
1-2 "	pattern
2-2 "	
3-2 "	

Pattern #5-2 units	
4-2 "	
5-2 "	
6-2 "	

continue until desired length, then repeat end pattern.

This lace pattern makes a series of lace diamonds completely around the plain tabby center, and is especially nice for luncheon place mats and napkins.

Trees a Summer and Winter weave on six harnesses
with the corded background

By Margaret Bergman, Poulsbo, Washington

Materials:

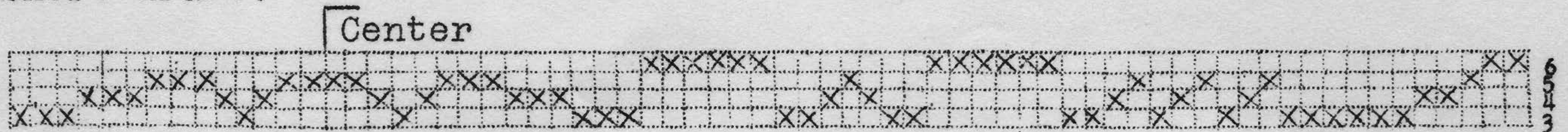
Warp...20/2 cotton

Weft...Perle cotton #10

Tabby..Basting thread

Reed...#18, set 2 threads to a dent

Short draft:



Tie up

1	2	3	4	5	A	B	
X	X	6
.	.	X	X	.	.	X	5
.	X	X	.	.	.	X	4
.	X	X	3
.	X	2
X	X	X	X	X	X	.	1

X is tied to the Lower Lamms

o is tied to the Upper Lamms

Threading: This summer and winter is threaded in the usual way, that is, each X of the short draft is expanded into a unit of four threads. The first three units are as follows: 1,6,2,6--1,6,2,6--1,5,2,5.

Treadling: The treadling of this summer and winter is very simple. Each unit consists of three steps, as follows:

1st step..Pattern treadle
2nd step..A tabby
3rd step..B tabby

One unit

Treadling draft:

Treadle #1--4 units

2--3
3--2
4--17
3--2
2--2
3--2
4--4

#3--2 units

2--2
3--2 5 times
4--2
3--2
4--6
5--12
4--3

#3--2 units

2--2
3--2
4--3
5--12
4--5
3--5
2--6
3--2
4--2
3--2
2--8

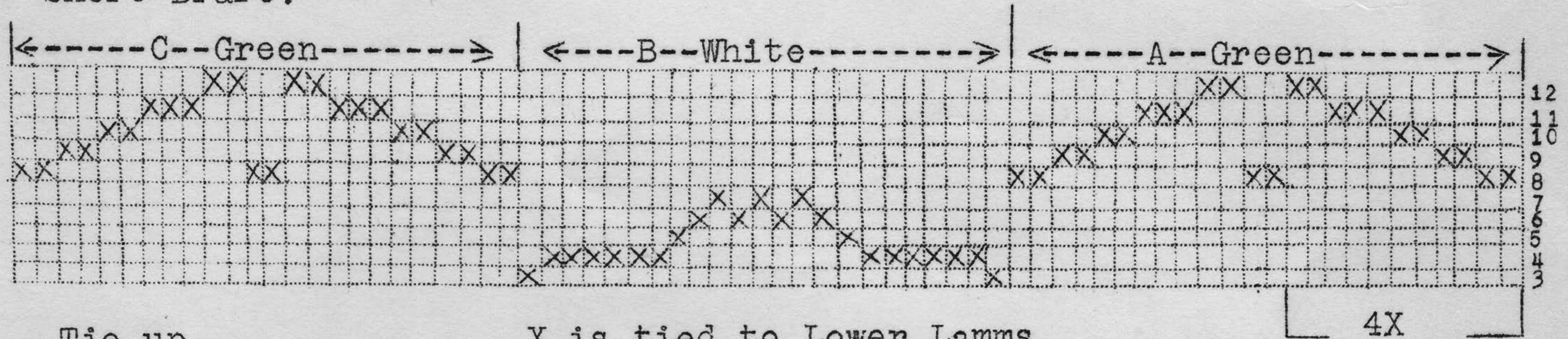
Washington Dogwood, a Summer and Winter weave on twelve harnesses

By Marjorie G. Morse, Bremerton, Washington

Materials:

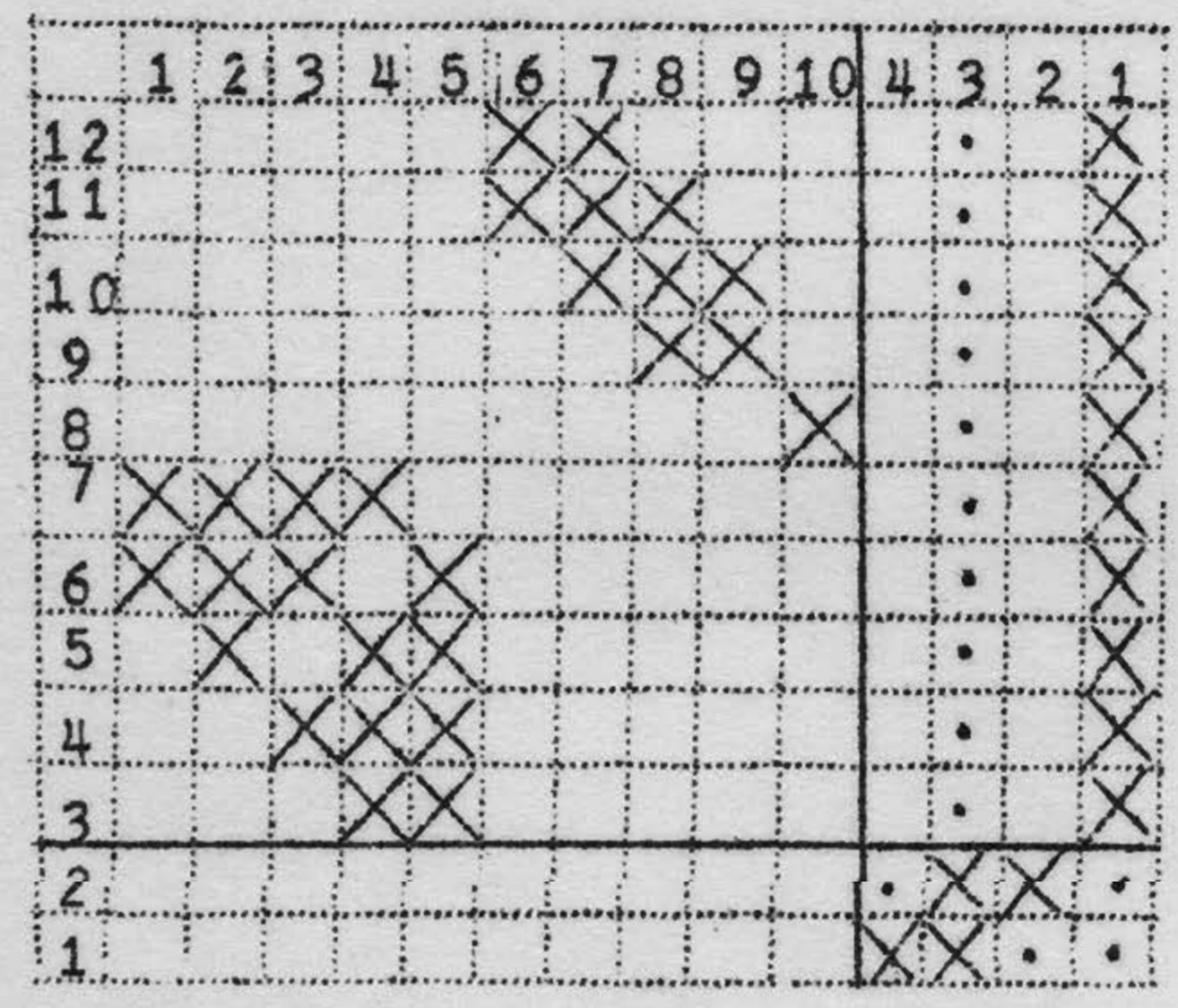
- Warp...Perle cotton 20/2, green and white
- Weft...Perle cotton #5, golden tan
- Tabby...Same as warp
- Reed...#15, set 2 threads to a dent

Short Draft:



Tie up

X is tied to Lower Lamms
O is tied to Upper Lamms



Pattern

Tabby

Long draft: In threading, each X on the short draft is expanded into a unit of 4 threads. The first X of the short draft is #8 and is threaded 1,8,2,8. Each X is expanded in this manner. For a piece set 45 inches in the reed, the following order for threading is shown, A,B,C,B,C, B,C,B,C,B,A.

Treadling: Each unit of summer and winter, with the diamond background is treadled in eight steps:

- 1st step..Tabby 1 alone
- 2nd " 2 and pattern treadle
- 3rd " 3 alone
- 4th " 4 and pattern treadle
- 5th " 1 alone
- 6th " 4 and pattern treadle
- 7th " 3 alone
- 8th " 2 and pattern treadle

One unit.

The same pattern treadle is used thru the entire unit.

Tabbies 1 and 3 are regular tabbies, while 2 and 4, with the pattern treadle, carries the colored weft thread.

Treadling draft for piece.

Treadle	#10--1	unit	#1--1	unit	#10--1	unit
	9--2		2--4		9--2	
	8--2	4X	3--1		8--2	
	7--2		4--1		7--2	
	6--2	Leaf	5--1	Dogwood	6--2	Leaf
	10--1	Border A	4--1	motif B	10--1	motif C
	6--2		5--1		6--2	
	7--2		4--1		7--2	
	8--2		3--1		8--2	
	9--2		2--4		9--2	
	10--1		1--1		10--1	

For the entire piece, treadle in the same order as threaded.