
ASSOCIATION OF NORTHWEST WEAVERS GUILDS

History Study Group



THE ANWG HISTORY STUDY GROUP

- A group of weavers who study an aspect of Northwest Weaving History
- We use the groups.io venue to share what we are learning
- This is the fourth year this group has produced a significant body of weaving study
- Our next study for 2022-2023 will be the weaves of Ingrid Boesel

2021-2022 STUDY TOPIC: MARGARET BERGMAN

Photo:

Margaret Bergman
Weaving at Penland

Source: [LINK](#)



WEAVER: CAROL HUNTER

Bronson Lace Bergman
Tree Wall Hangings

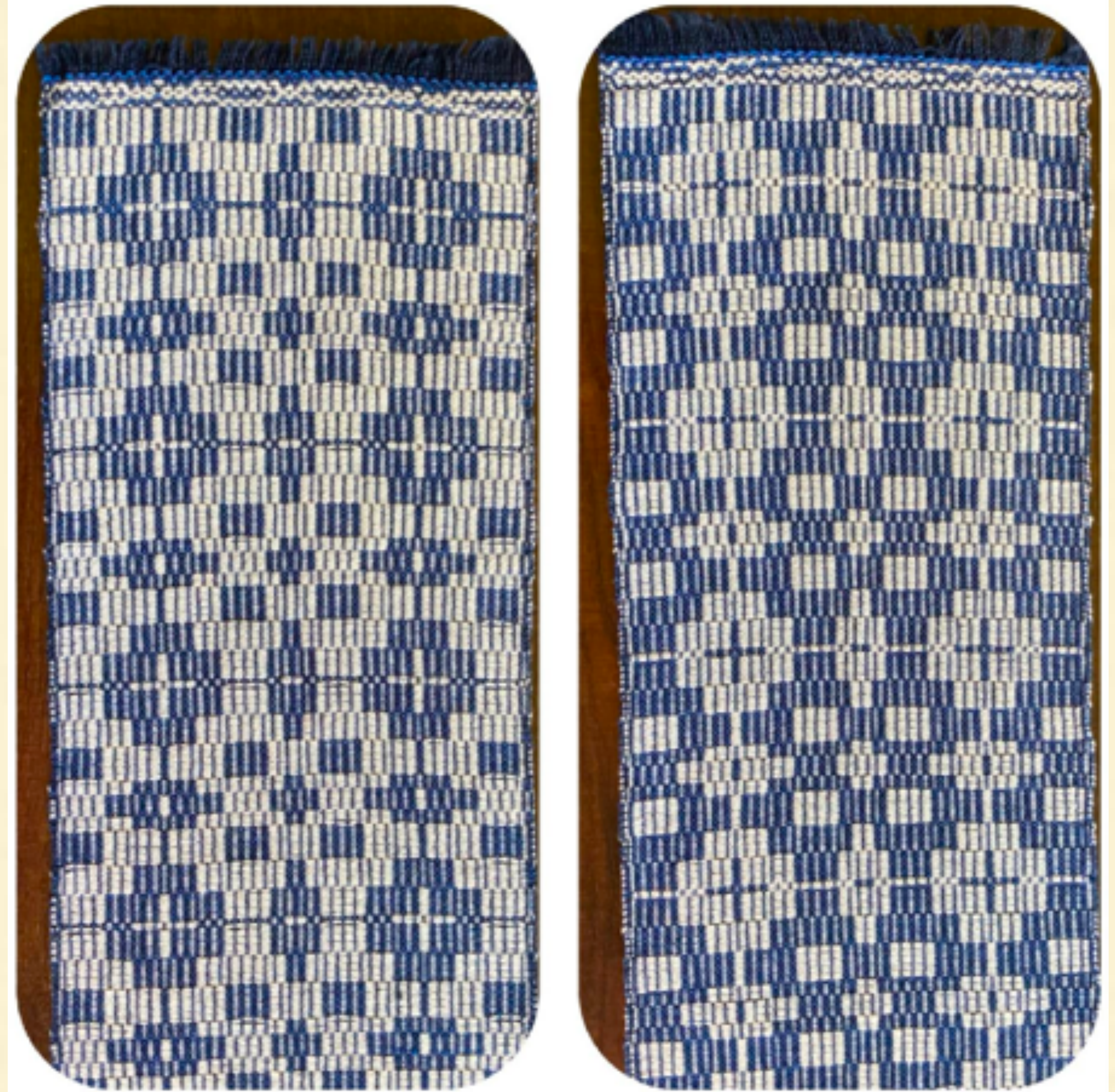
Made with 20/2 Line
and Tow Linen. Carol
has always been drawn
to the Bergman tree
designs, as they appear
more real than other
handwoven tree designs.



WEAVER: HOLLY HAYNES

Bergman Crackle Weave Table Runner

Made with 8/2 cotton warp, 10/2 and 5/2 cotton for weft. Holly was inspired from the Northwest Weavers publication, Volume I No. 4, which can be found on the ANWG website. She also wove several samplings of various Crackle Weave treadlings.



The photos above show both sides of the Runner

WEAVER: ILA MCCALLUM

Bergman Weave Table Runner

Made with 10/2 cotton warp, 20/2 and 5/2 cotton for weft. Ila found the drafts for her Table Runner in Strickler's 8-shaft Pattern Book, page 179. This is one of the specific weaves developed by Bergman.

Detail photos show two sides of the Runner



WEAVER: ISABELLE FUSEY

Bergman Weave Table Runner

Made with 8/2 cotton for the warp, 16/2 cotton 8/2 cotton for the weft. It is a runner in Bergman Weave, inspired by Philis Alvic. The rose path diamonds, typical for this weave, are readily apparent in Isabelle's cloth.



WEAVER: JACKIE WORBOYS

Bergman Crackle Weave Towels

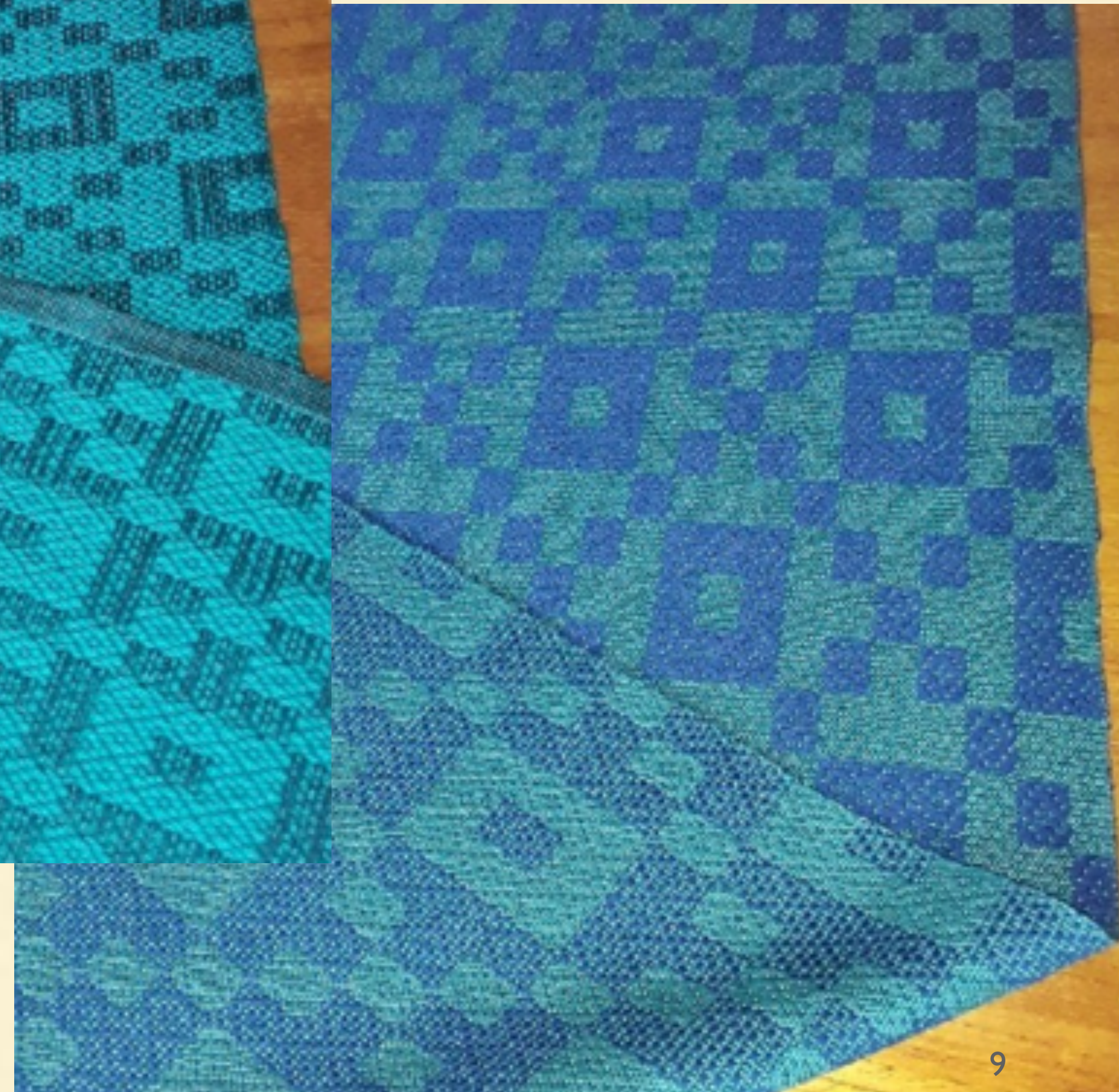
Made with 8/2 cotton warp & weft. Like Holly, Jackie chose the Crackle Weave from Northwest Weavers publication, Volume I No. 4. Jackie successfully worked through the challenge of weaving the required number of repeats to achieve exactly the desired dimensions for her towels.



WEAVER: LINDA GETTMANN

Bergman Weave Table Runners

Made with 10/2 cotton warp, 20/2, 8/2 and 5/2 cotton for weft. Again, like Ila and Isabelle, Linda used the Bergman Weave. Her drafts were found in the Strickler book. After experimenting, Linda decided she like the effect of using only 5/2 for weft, as shown in the first photo.



WEAVER: MEGAN ROTHSTEIN

Bergman Crackle Weave Curtain

Made with Dragon Tale Rayon Slub for warp, and Lion Brand's "a Little Bit of Everything Yarn" & 10/2 cotton for weft. Here is a third version of the Crackle draft from Northwest Weavers publication, Volume I No. 4. Megan created a very different cloth from the others for her studio curtain with these novelty yarns.



WEAVER: PAT DONALD

Bergman Weave Pillow Cover

Made with 10/2 cotton for warp, and 10/2 cotton & 3/2 cotton for the weft. Pat found her draft in two Harriet Tidball books, and also in Adventures in Weaving by Gertrude G. Greer. Here again is the Bergman weave, which Pat tells us is a three-tie weave.



WEAVER: REBECCA WINTER

1. Bergman Thistle Lace Runner
2. Shadow Weave Wall Hanging

The runner is made with Bucilla Blue Label Knitting and Crochet Yarn. The wall hanging is made with 5/2 cotton. Rebecca began by developing a profile draft based on the Thistle Lace found in Northwest Weavers publication, Volume I No. 1. Then she created structure specific drafts from the profile for both of the weavings.



WEAVER: ROBIN QUINN-DOWLING

1. Crackle Placemats & Table Runner
2. Bergman Weave Samples
3. Dukagång Pillow Cover



Robin created 3 projects as part of her Bergman study. She wove placemats and a table runner in Crackle Weave. Then she wove her first 8-shaft sampling project using the 3-tie Bergman Weave. And she was inspired by the images of Margaret Bergman's art weaving on the National Nordic Museum's collection site. From this she wove a pillow cover in Dukagång with weft inlay.



WEAVER: SHEILA CAREY

Bergman Weave Shawl

Made with 6-ply silk yarn. Sheila created an original 10-shaft shawl draft using the 3-tie Bergman Weave. She had recently participated in another group and wove a set of towels based on a photo of fences. There is also a reference to the “fence” in her amazing Bergman Weave Shawl.



WEAVER: SUE WALSH

Bergman Damask Napkins

Made with 16/2 cotton for both warp & weft. Sue made a set of six napkins in the damask version of Bergman's three-block pattern also published in Gertrude Greer's 1951 book. These are the colors for the 2023 ANWG Conference.



Quote from Robin Quinn-Dowling's study report:

“I especially enjoyed discovering more about Margaret Bergman's life, her generosity, and her talent. A new favorite quote, attributed to Margaret, found on the Eugene Textile Center's website (2022) is ~

‘Share what you have.

Nothing ever comes out of a closed fist.’ “

“It is in the Sharing that the Secrets are kept.”

—Nelson Zink

Thank you for your Interest

- Contact your ANWG Education Chair, Rebecca Winter, to request an invitation to join our groups.io